



créateur de bien-être



COLLECTION 2023

DECEMBER 2023 EDITION



CREDO

For a world more respectful of
people and the environment



A photograph of a stone fountain in a courtyard. The fountain has a large, mushroom-shaped basin on top of a tall, cylindrical column. Water is dripping from the edges of the basin. The fountain is surrounded by a pool of water that reflects the surrounding stone buildings and the fountain itself. The buildings are made of light-colored stone and have several windows. A small sign with the Jallatte logo is visible in the background. An orange banner with the text 'JALLATTE'S DNA' is overlaid on the top left of the image.

JALLATTE'S DNA

Created in 1947 by Pierre Jallatte, the inventor behind the European concept of the **safety shoe** which he had discovered in the United States, ever since it was founded, the Jallatte® company has been located in the Gard municipality of **Saint-Hippolyte-du-Fort**, sheltered in a 17th century fort inspired by Vauban, which became the historical site of Jallatte® four centuries later.

For **75 years**, Jallatte® has established itself as the **leader** on the safety shoe market, by focusing on **innovation and research** into technical performance, in order to guarantee protection for people at work, to keep them healthy and to improve their well-being.

Jallatte® has been able to find a delicate balance between **technology, safety, comfort and design**, by offering **complete ranges** that meet the needs of the harshest environments while confirming the good taste of anyone who wears them.

Today, its design efforts are focused on preventing risks of **DMS** (Musculoskeletal Disorders) thanks to **innovative materials** and **new technologies** in multi-density soles covered by **international patents**.

After safety, comfort and design, Jallatte® is paving the way for **anti-fatigue performance** with an ergonomic approach adapted to all body shapes and working situations.

Jallatte®, creating well-being since 1947

OUR CSR COMMITMENT



► WHAT IS CSR?

The European Commission defines corporate social responsibility (CSR) as a concept whereby companies integrate social and environmental concerns in their business operations and in their interaction with their stakeholders on a voluntary basis.

"A company that adopts CSR therefore seeks to have a positive impact on society while also being economically viable".

Source : economie.gouv.fr, July 2022

For several years, Jallatte has been committed to a world more respectful of people and the environment with its CSR initiative called J-CLEAN.

► WHICH CSR INITIATIVES HAS JALLATTE PUT IN PLACE?

1. The **relocalisation** of part of production to the **historical site** of Saint Hippolyte du fort **in the Gard region**
2. The creation of collections of **safety shoes certified as carbon neutral** by **Bureau Veritas** according to **international standard PAS 2060**, and **made in France**
3. Our commitment to a plan to **reduce our carbon footprint** in the long term certified according to the requirements of standard PAS 2060 (reducing our energy consumption and using green electricity)
4. The development of **local employment** and **expertise**
5. The **maintenance of gender equality** at the company with a score of 87 points out of 100 on the gender pay gap index, which is 12 points above the legal minimum set by the "Professional Future" Law of 5 September 2018 and its implementing decree No 2021-262 of 10 March 2021
6. The adoption of **social benefits** and the development of a **programme for quality of life at work** to improve well-being at work and the company's performance
7. A strategy to **control costs and to manage pricing** helping take profitable market shares and guaranteeing the company's longevity
8. The priority given to **local suppliers and service providers** whenever possible
9. A plan to **reduce our waste** by setting up sorting solutions and a composter
10. The protection of the environment and maintenance of the ecosystem by setting up **bee hives around Jallatte fort**

The solid initiatives we are implementing as part of J-CLEAN make Jallatte a committed and responsible player in a **societal and environmental process** aimed at improving the well-being of our employees and users, while also preserving the planet!

BLUE, WHITE AND RED



ASSEMBLY MADE IN FRANCE

Transparent about designations of origin means we have to communicate clearly and unambiguously for our retail customers and end users.

Too many people on the market hide their manufacturing origins or remain vague, making it impossible to build trust in long-term customer relationships.

Here at Jallatte, our process is clear: we have decided to very clearly indicate any items in our catalogue with a **Blue, White and Red pictogram**, whose **upper and sole assembly is guaranteed to be "Made in France"**.

The others without a pictogram can come from our site in the Cévennes, depending on our manufacturing programmes, or from one of our factories in Tunisia which are 100% integrated and controlled by our Group structure. We should point out that all of our uppers are cut and sewn in these workshops clearly indicated as "UPPER Made In Tunisie", meaning we are not eligible for this declaration.

All these declarations clearly stated in our communication tools and on the regulatory labels of our products are naturally to make Jallatte a **transparent and responsible manufacturer** that wants to develop its customer relationship according to the values of mutual respect and long-term trust.



TRAINERS RANGE

J'respect / 6

J-Energy / 16

J-Hop / 26

Triftane X / 30

Tapis Rouge / 32

J-Industry / 34

J-Nude 2 / 40

Helium / 42

OUTDOOR RANGE

Synergy / 46

J-Escape / 52

Softane Adventure / 56

Softane Avant-Garde / 58

Softane Tradition / 61





CITY RANGE

Softane Prestige / 62

ASSORTED RANGE

Specials / 63

Triftane Excellence / 64

WORK RANGE

J-Pro / 66

MERCHANDISING / 70

TECHNOLOGIES / 72

INDEX / 78

STANDARDS / 81

THE CONCEPT

Being a spokesperson for a world that is **more respectful of people and the environment**, Jallatte has been committed to an extensive CSR plan for several years, called **J-Clean** which involves :

- ▶ Relocating part of the production to the **historic factory in Saint-Hippolyte-du-Fort**
- ▶ Using **local know-how**
- ▶ Adopting a **responsible purchasing policy**



To combat global warming and the natural disasters it causes, the mission set by the United Nations is clear :

- ▶ **TO REDUCE GHG EMISSIONS***
by **45%** by 2030

According to the United Nations, becoming carbon neutral involves 3 concrete actions :

- ▶ Measuring our carbon footprint
- ▶ Reducing this carbon footprint
- ▶ Offsetting what we have not yet been able to reduce

To address the climate emergency and to help **reduce greenhouse gases**, our SME from Gard is confirming its commitment to CSR, known as J-Clean, by creating a **new generation of eco-friendly safety footwear : J'respect**.



With J'respect, our production site based in Saint-Hippolyte-du-Fort has become the first and only factory in France, and in Europe, to manufacture Carbon Neutral-certified safety footwear !



ST HIPPOLYTE
DU FORT

MEASURE

Nowadays, by analysing the complete life-cycle of our products, we can estimate that a traditional safety shoe accounts for more than 15kg of CO2 per pair.



REDUCE

To take real action and to reduce our carbon footprint, we have launched our J-Clean CSR initiative and created the J'respect collection:



ECO-DESIGNED UPPER

▶ **RECYCLED MATERIALS**
between 50% and 100%



▶ **RAW MATERIALS**
with low CO2 emissions

BIOSOURCED SOLE

CARBON FOOTPRINT REDUCED BY 60%
Compared with conventional PU

100% RENEWABLE MATERIALS
Biomass Balance Polyurethane



Developed in collaboration with BASF, this sole is designed from 100% renewable materials and without any fossil fuels. This is the Biomass Balance approach. The next-gen PU of the J'respect sole is made from recycling and fermenting organic waste.

Thanks to our J-Clean CSR commitments and the creation of this J'respect collection, a Jallatte safety shoe now on average accounts for 6kg of CO2 per pair, which reduces the carbon footprint by 40%!

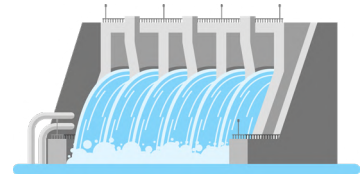


OFFSET

To become carbon neutral, the final pillar of our initiative is offsetting.

Jallatte is committed to this initiative of reducing greenhouse gases by financing, through the United Nations, a project to generate renewable energy in Laos.

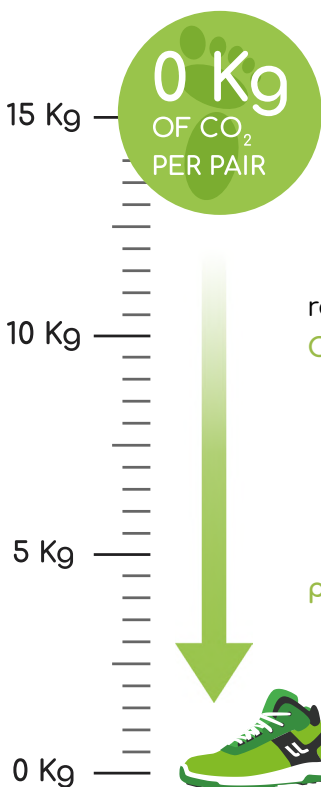
SELF-SUFFICIENCY
In Energy



NOT USING CARBON
For "clean" energy

By financing this project for the environment and society, Jallatte is meeting the sustainable development goals set by the United Nations.

SUSTAINABLE DEVELOPMENT GOALS



Thanks to our J-Clean initiative and to our complete measuring/reducing/offsetting, the J'respect collection can ultimately claim 0 kg of CO2 per pair.



We could not do it without the support and commitment of our partners and customers, all of us together, working for Zero Carbon!



Jallatte

respect



JALVIVO ESD S3 CI SRC

UPPER : Recycled Putek Spider
CODE : JIJ1447



JALECO ESD S3 CI SRC

UPPER : Recycled Putek Spider
CODE : JIJ1434



JALFUTURE ESD S3 CI SRC

UPPER : Recycled microfibre
CODE : JIJ1414



JALNATURE ESD S3 CI SRC

UPPER : Recycled microfibre
CODE : JIJ1424



JALO2 ESD S1P CI SRC

UPPER : Recycled microfibre, velvet look
CODE : JIJ1446

- Lining 3D Surf mesh
- Toe cap Springtane B
- Insole Maxi Soft Duo
- Anti-puncture insert Flexthane
- Sole PU/PU BmB BASF®
- Size 35 - 48





JALBASALT ESD S3 CI SRC

UPPER : Recycled microfibre, nubuck look
CODE : JIJI534



JALONYX ESD S3 CI SRC

UPPER : Recycled microfibre, nubuck look
CODE : JIJI544



JALQUARTZ ESD S2 FO SR

UPPER : Recycled microfibre
ANTI-PUNCTURE INSERT : N/A
CODE : JIJI512



JALGABBRO ESD S2 FO SR

UPPER : Recycled microfibre
ANTI-PUNCTURE INSERT : N/A
CODE : JIJI522



JALOXY ESD S1P CI SRC

UPPER : Recycled microfibre, velvet look
CODE : JIJI556

Lining	3D Surf mesh
Toe cap	Springtane B
Insole	Maxi Soft Duo
Anti-puncture insert	Flexthane
Sole	PU/PU BmB BASF®
Size	35 - 48





JALaubier ESD S3 CI SRC

UPPER : Recycled Putek Spider
CODE : JYJY464



JAlLiber ESD S3 CI SRC

UPPER : Recycled Putek Spider
CODE : JYJY474



JAlHydro ESD S3 CI SRC

UPPER : Smooth recycled microfibre
CODE : JYJY484



JAlRiver ESD S3 CI SRC

UPPER : Smooth recycled microfibre
CODE : JYJY494



Infinergy® anti-fatigue insert by BASF® made from **100% renewable materials and without any fossil fuels.**

100% recycled laces. Comes in 2 colours (black & green).
Black laces for a plain look, in green for a colourful look or in black and green for a quirky look!



- Lining 3D Surf mesh
- Toe cap PremAlu B
- Insole Soft
- Anti-puncture insert Flexthane
- Sole Infinergy® BmB PU2D/
E-TPU by BASF®
- Size 35 - 48





The SYNERGY collection is fitted with a PU “scuffcap”, which guarantees superior, optimum protection at the front of the foot.

This “scuffcap” allows you to work on your knees without the risk of premature wear and tear of the material on the front of the toe cap.



JALTREE ESD S3 CI SRC

UPPER : Recycled Putek Spider
CODE : JYJY434



JALFOREST ESD S3 CI SRC

UPPER : Recycled microfibre, nubuck look
CODE : JYJY454 SIZE : 38 - 48

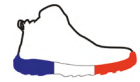


JALGROVE ESD S3 CI SRC

UPPER : Recycled microfibre, nubuck look
CODE : JYJY444

- Lining 3D Surf mesh
- Toe cap PremAlu B
- Insole Soft
- Anti-puncture insert Flexthane
- Sole Infinergy® BmB PU2D/
E-TPU by BASF®
- Size 35 - 48





JALTOUNDRAL ESD S3 CI SRC

UPPER : Recycled Putek Spider
CODE : JVJV207

Lining 3D Surf mesh

Toe cap PremAlu B

Insole Soft

Anti-puncture insert Flexthane

Sole PU/PU BmB BASF®

Sizes 35 - 48



PRODUCTS CERTIFIED ACCORDING TO STANDARD EN ISO 20345



TECHNOLOGIES

UPPER



PUTEK® SPIDER technology uses new threads that are highly resistant to abrasion, for greater durability and increased performance. These highly resistant and water-repellent fabrics help create ultra-lightweight and extrabreathable S3 products. This PUTEK® is made from **68% recycled polyester**.



40% microfibre from **recycled polyamide**.



Velvet look microfibre, **50% from recycled polyester**.

LINING



An antibacterial, innovative, technical lining that combines high performance in breathability and resistance to abrasion with a flexible, comfortable feel. Its special 3-layer structure encourages thermoregulation to keep feet dry in complete comfort. This lining is made from **66% recycled material**.

INSOLE



This removable, comfortable insole is made from 2 materials :

- ▶ A « SOFT » top layer made from Dynamic **Biomass Balance** polyurethane by BASF® with shape memory, which is heat-sensitive and active over the entire surface of the foot.

- ▶ A « MAXI » size **anti-fatigue** built-in insert made from **Biomass Balance** Elastopan by BASF®, the elastomer used for anti-fatigue mats.



SOFT insole made from **heat-sensitive, shape-memory** BASF® Dynamic polyurethane that works across the entire surface of the foot.

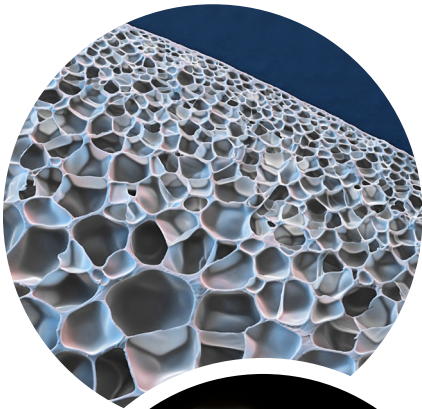
Placed directly under the sole of the feet, SOFT **improves weight distribution** while cushioning pressure points and allowing **positive energy return**.

ANTI-PUNCTURE INSERT



Non-thermal, non-magnetic composite anti-puncture insert made from **50% recycled polyester**.

Properties of BASF®'s Infinergy® expanded thermoplastic polyurethane (E-TPU)



- High elasticity to flexibility and lightness
- Flexibility and low density
- High energy return (energy return coefficient over 55%)
- Tensile stress resistant
- Abrasion resistant
- Absorbs very little water
- Resistant to significant temperature variations over time (-20°C to + 40°C)

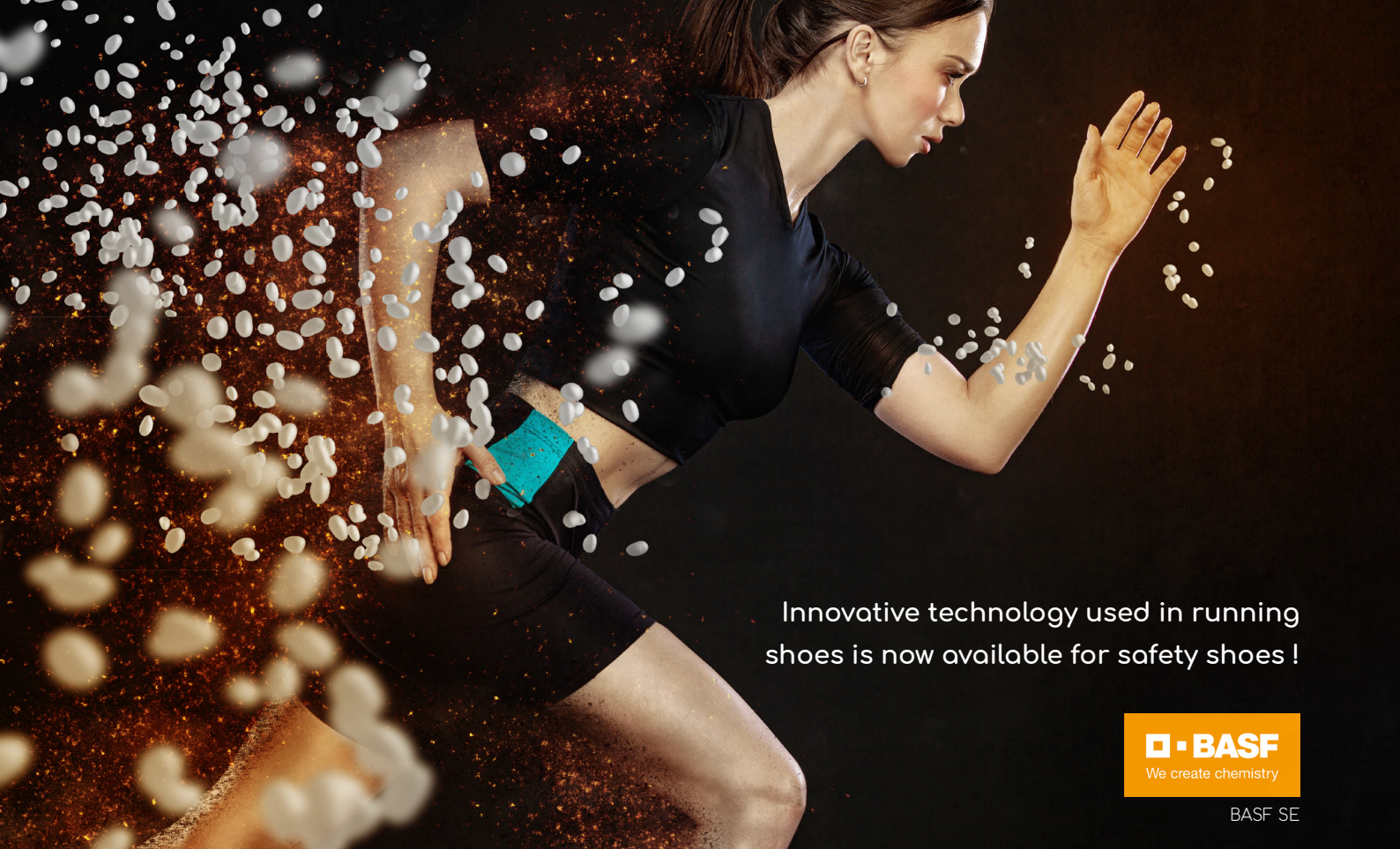


Infinergy® stores energy so that it can be better released. A confluence of technology that makes for dynamic cushioning. **Soft, dynamic** cushioning that provides unprecedented energy returns.

- Energy is stored as the foot hits the ground.
- And is returned through the sole as the foot lifts up, pushing the foot forward.

Infinergy® has **excellent durability** even with continuous and extended use. Infinergy®, unlike other traditional foams, retains high levels of **flexibility** and **elasticity** without any signs of stiffness, even at low temperatures.





Innovative technology used in running shoes is now available for safety shoes !

BASF
We create chemistry

BASF SE

Infinergy[®]

Made with Infinergy[®] by BASF

Already used with success in running shoes, this **innovative material** improved athletic performances, reducing fatigue.

What if it was the same for safety shoe users ?

For everyone who is exposed to arduous work situations :

- Standing for long periods
- Walking long distances
- Constant kneeling or squatting



J-ENERGY safety footwear

- Returns **more than 55% of the stored energy** while walking
- Save one hour of energy per day
- Reduces feeling of fatigue
- Provides **outstanding comfort** due to the cushioning of the sole
- Absorb plantar pressure zones
- Prevents the risk of developing lower limbs MSDs (musculoskeletal disorders)

According to BVA biomechanical study No. 1095 carried out in 2020 by the CTC, wearing J-ENERGY safety footwear reduces leg muscle activity by 17%. Because of BASF's Infinergy insert, the push-off stage of the foot is more efficient, which reduces the effort required and, therefore, energy expenditure.

Our « Energy » is valuable, let's protect it !



NEW

JALFLASH ESD S3S CI FO SR

UPPER : Suave nubuck leather

LINING : 3D Surf mesh

CODE : JYJY189 SIZE : 35 - 48



NEW

JALSTAR ESD S3S CI FO SR

UPPER : Suave nubuck leather

LINING : 3D Surf mesh

CODE : JYJY289 SIZE : 35 - 48



NEW

JALBOMBER ESD S3 CI SRC

UPPER : PUTEK STAR

LINING : 3D Surf mesh

CODE : JYJY498 SIZE : 35 - 48



NEW

JALWAVE ESD S3 CI SRC

UPPER : Suave nubuck leather

LINING : 3D Surf mesh

CODE : JYJY499 SIZE : 35 - 48



JALPURE ESD S3 CI SRC ●

UPPER : PUTEK PLUS abrasion-resistant and breathable

LINING : 3D Roma mesh

CODE : JYJY250 SIZE : 35 - 48



ASEPTANE

JALPERFECT ESD S3 CI SRC

UPPER : Breathable and waterproof microfiber

LINING : 3D Roma mesh

CODE : JYJY251 SIZE : 35 - 48

Toe cap PremAlu B

Insole Soft + Gel

Anti-puncture insert Flexitone

Sole Triple density with high energy return PU2D/E-TPU Infinergy® from BASF®



AN ASSERTIVE NEW STYLE :

SPORT & chic



JALPACINO S3 CI SRC

CODE : JYJY500 SIZE : 38 - 48



JALDENIRO S1P SRC

CODE : JYJY501 SIZE : 38 - 48



Infenergy®

Made with Infenergy® by BASF

+55% energy restitution !

- Upper Pure full-grain leather
- Toe cap PremAlu B
- Insole Soft+Gel
- Anti-puncture insert Flexthane
- Sole Triple density with high energy return PU2D/E-TPU Infenergy® from BASF®



LINK-ESD





JALCLIMATE S3 CI WR SRC

UPPER : PUTEK® PLUS highly resistant to abrasion, water resistant and breathable

LINING : GORE-TEX® Membrane

CODE : JYJY137 SIZE : 38 - 48



JALDYNAM ESD S3 CI SRC

LINING : 3D Surf mesh

CODE : JYJY103 SIZE : 35 - 48

JALSPRING ESD S3 CI SRC

LINING : 3D Surf mesh

CODE : JYJY203 SIZE : 35 - 48



JALPULSE ESD S3 CI SRC

LINING : 3D Roma mesh

CODE : JYJY104 SIZE : 38 - 48

JALTONIC ESD S3 CI SRC

LINING : 3D Roma mesh

CODE : JYJY204 SIZE : 38 - 48

- Upper Suave nubuck leatherer
- Toe cap PremAlu B
- Insole Soft + Gel
- Anti-puncture insert Flexthane
- Sole Triple density with high energy return PU2D/E-TPU Infinergy® from BASF®





JALTURBO ESD S3 CI SRC

UPPER : Full grain water resistant leather
 CODE : JYJY132 SIZE : 38 - 48



JALGEAR ESD S3 CI SRC

UPPER : Full grain water resistant leather
 CODE : JYJY232 SIZE : 38 - 48



JALSOLID ESD S3 CI SRC

UPPER : PUTEK® PLUS highly resistant to abrasion, water resistant and breathable
 CODE : JYJY134 SIZE : 38 - 48



JALSKIN ESD S3 CI SRC

UPPER : PUTEK® PLUS highly resistant to abrasion, water resistant and breathable
 CODE : JYJY234 SIZE : 38 - 48

Lining	3D Surf mesh
Toe cap	PremAlu B
Insole	Soft + Gel
Anti-puncture insert	Flexthane
Sole	Triple density with high energy return PU2D/E-TPU Infinergy® from BASF®





JALPUNCH ESD S1P CI SRC

UPPER : Smooth suede leather with breathable Nylon fabric inserts

LINING : 3D Surf mesh

CODE : JYJY101 SIZE : 35 - 48



JALPEPS ESD S1P CI SRC

UPPER : Smooth suede leather with breathable Nylon fabric inserts

LINING : 3D Surf mesh

CODE : JYJY201 SIZE : 35 - 48



JALACTIVE ESD S1P CI SRC

UPPER : Perforated suede leather, anti-abrasion textile

LINING : 3D Roma mesh

CODE : JYJY102 SIZE : 38 - 48



JALRUN ESD S1P CI SRC

UPPER : Perforated suede leather, anti-abrasion textile

LINING : 3D Roma mesh

CODE : JYJY202 SIZE : 38 - 48

- Toe cap PremAlu B
- Insole Soft + Gel
- Anti-puncture insert Flexthane
- Sole Triple density with high energy return PU2D/E-TPU Infinergy® from BASF®





JALHYGIE ESD S3 SRC

CODE : JYJY216

SIZE : 35 - 46



JALCARBO ESD S3 SRC

CODE : JYJY217

SIZE : 35 - 46

- Upper Microfiber Aseptane
- Lining 3D Surf mesh
- Toe cap Springtane B
- Insole Soft + Gel
- Anti-puncture insert Flexthane
- Sole Triple density with high energy return PU2D/E-TPU Infinergy® from BASF®



LADIES' COLLECTION



Shoes adapted to women's feet



DOUBLE LACE

For two different looks: sober or fun !



MIKY ESD S3 CI SRC

UPPER : Water resistant leather, Nubuck Finishing

CODE : JYJY109 SIZE : 35 - 42



NOA ESD S3 CI SRC

UPPER : Water resistant leather, Nubuck Finishing

CODE : JYJY209 SIZE : 35 - 42



LAIA ESD S1P CI SRC

UPPER : Smooth suede leather with breathable Nylon fabric inserts

CODE : JYJY212 Size : 35 - 42



INES ESD S1P SRC

UPPER : Textured technical fabric

CODE : JYJY211 SIZE : 35 - 42

- Lining 3D Surf mesh
- Toe cap PremAlu B
- Insole Soft + Gel
- Anti-puncture insert Flexthane
- Sole Triple density with high energy return PU2D/E-TPU Infinergy® from BASF®





Jallatte

Jallatte

SUPPORT

ESD

Jallatte

J-HOP!



BASF
We create chemistry

The new sole designed with 41.5% Extra Rebound by BASF®, ensures a constant return of energy of more than 40% over the entire surface of the foot, both in the support phase and in the pushing phase of the foot.

Its composition, particularly soft and light, brings lightness, wellness and total comfort, reducing the feeling of tiredness both in the upright position and in a situation of sustained activity.



Putek® PLUS Technology uses newly developed **high resistance abrasion** yarns, woven directly into the fabric, to obtain high tenacity and **high-performance** abrasion resistant fabrics. These highly **resistant** and **water-repement** fabrics allow the creation of **ultra-light** and **ultra-breathable** S3 products.



JALHYBRIS ESD S3 CI SRC

CODE : JHJH408 SIZE : 35 - 48



JALMETIS ESD S3 CI SRC

CODE : JHJH308 SIZE : 35 - 48



JALKALLISTO ESD S3 CI SRC

CODE : JHJH409 SIZE : 38 - 48



JALDIDO ESD S3 CI SRC

CODE : JHJH309 SIZE : 38 - 48

Upper PUTEK® PLUS highly resistant to abrasion, water resistant and breathable

Lining 3D Surf mesh

Toe cap PremAlu B

Insole Soft + Gel

Anti-puncture insert Flextone

Sole PU/PU Extra Rebound

 **PremAlu B**  **SOFT+GEL LINK-ESD**



PRODUCTS CERTIFIED ACCORDING TO STANDARD EN ISO 20345





JALURANIA ESD S3 CI SRC

UPPER : Water resistant leather, Nubuck
Finishing

CODE : JHJH407 SIZE : 35 - 48



JALEVA ESD S3 CI SRC

UPPER : Water resistant leather, Nubuck
Finishing

CODE : JHJH307 SIZE : 35 - 48



JALHIPPO ESD S3 CI SRC

UPPER : Full grain water resistant leather

CODE : JHJH406 SIZE : 35 - 48



JALJUNO ESD S3 CI SRC

UPPER : Full grain water resistant leather

CODE : JHJH306 SIZE : 35 - 48

- Lining 3D Surf mesh
- Toe cap PremAlu B
- Insole Soft + Gel
- Anti-puncture insert Flexthane
- Sole PU/PU Extra Rebound





JALTHIA ESD S1P SRC ●

CODE : JHJH402 SIZE : 35 - 48



JALIDA ESD S1P SRC ●

CODE : JHJH302 SIZE : 35 - 48



JALGALLIA ESD S1P SRC ●

CODE : JHJH404 SIZE : 38 - 48



JALADRIA ESD S1P SRC ●

CODE : JHJH304 SIZE : 38 - 48



JALFIDES ESD S1P SRC ●

CODE : JHJH401 SIZE : 38 - 48



JALCERES ESD S1P SRC ●

CODE : JHJH301 SIZE : 38 - 48

- UPPER Rio suede leather and breathable anti-abrasion textile
- Lining 3D Surf mesh
- Toe cap PremAlu B
- Insole Soft + Gel
- Anti-puncture insert Flexthane
- Sole PU/PU Extra Rebound



TRIFTANEX

The safety sneakers of the TRIFTANE X collection are equipped with a Vibram® sole that guarantees more durability and better resistance to slipping and on hot surfaces to ensure the safety and comfort of workers in the oil & gas sector, but also in industry, maintenance and mechanics.





JALHYRA S3 CI HRO SRC

UPPER : Water resistant leather, Nubuck Finishing

CODE : JXJX907 SIZE : 35 - 48



JALTEA S3 CI HRO SRC ●

UPPER : Water resistant leather, Nubuck Finishing

CODE : JXJX007 SIZE : 35 - 48



JALPOLYXO S3 CI HRO SRC

UPPER : Full grain water resistant leatherather

CODE : JXJX906 SIZE : 35 - 48



JALINO S3 CI HRO SRC

UPPER : Full grain water resistant leatherather

CODE : JXJX006 SIZE : 35 - 48



JALARTEMIS S1P HRO SRC ●

UPPER : Smooth suede leather with breathable Nylon fabric inserts

CODE : JXJX902 SIZE : 35 - 48



- Lining 3D Surf mesh
- Toe cap PremAlu B
- Insole Soft + Gel
- Anti-puncture insert Flexthane
- Sole Triftane X Vibram®



This triple-density insole, made from a revolutionary elastomer used in the manufacture of anti-fatigue mats, **distributes sole pressure** ; It can **absorb** and **reduce stress on the body** reducing traumas associated with static, prolonged working positions.

High performance in terms of **comfort**, **balance** and **shock distribution**.





JALTURBO-TR ESD S3 CI SRC ●

UPPER : Full grain water resistant leather

LINING : 3D Surf mesh

CODE : JTJT805

SIZE : 35 - 48



JALGEAR-TR ESD S3 CI SRC ●

UPPER : Full grain water resistant leather

LINING : 3D Surf mesh

CODE : JTJT705

SIZE : 35 - 48



JALPULSE-TR ESD S3 CI SRC

UPPER : Nubuck leather, anti-abrasion water-repellent textile

LINING : 3D Roma mesh

CODE : JTJT803

SIZE : 38 - 48



JALTONIC-TR ESD S3 CI SRC

UPPER : Nubuck leather, anti-abrasion water-repellent textile

LINING : 3D Roma mesh

CODE : JTJT703

SIZE : 38 - 48



JALRUN-TR ESD S1P SRC ●

UPPER : Smooth perforated suede leather

LINING : 3D Roma mesh

CODE : JTJT701

SIZE : 38 - 48



- Toe cap PremAlu B
- Insole Soft + Gel
- Anti-puncture insert Flexthane
- Sole Triple density with plantar pressure distribution PU2D/ Elastopan® from BASF®





J-INDUSTRY^{4.0}

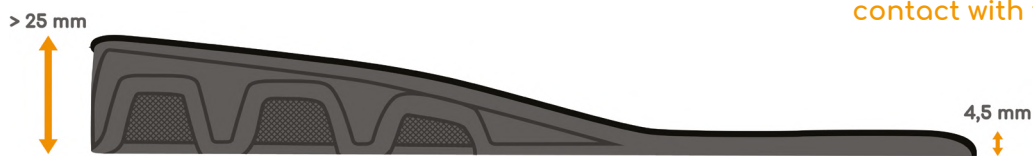
EXTENDED STANDING HEALTH SOLUTION



All-round versatility that reduces tiredness and fatigue in all situations.

MAXI-Soft Duo™ is an entirely innovative insole concept, designed especially for people who have to stand for many hours a day.

It combines an insole with a comfort layer, directly in contact with the sole of the foot



MAXI-Soft Duo™ balances posture and provides an undeniable feeling of comfort, due to two associated technologies, which the user perceives directly at their workstation.

Its elastic deformation properties permits the insole to provide both progressive and prolonged cushioning throughout the step or while walking and a return of energy during the pressure stage on the foot for a guaranteed anti-fatigue effect.



The removable comfort insole is made of 2 materials :

- +

A 'SOFT' BASF® dynamic polyurethane layer including memory foam, which is heat-sensitive and active over the entire surface of the foot.

Under the soles of the feet, SOFT improves weight distribution by reducing pressure points and the feeling of discomfort.
- +

An integrated 'MAXI'-size anti-fatigue insert made of BASF® Elastopan, an elastomer that is used in anti-fatigue mats. Positioned beneath the base layer, this MAXI insert cushions and alleviates stress on the body, which is forced to stand upright for many hours a day, both while in motion and while walking, thus reducing the risk of MSDs (musculoskeletal disorders) in the lower limbs.



JALPYTHON ESD S3 CI SRC

CODE : JIJ1244 SIZE : 35 - 48

BOA® Fit System is a rapid, easy and accurate lacing system with no need for laces. **Eliminates the risk of fall** and untying laces

**Safety, comfort, speed
= preserved health !**



JALTECHNO ESD S3 CI SRC

CODE : JIJ1124 SIZE : 35 - 48

JALNANO ESD S3 CI SRC

CODE : JIJ1224 SIZE : 35 - 48



JALPROCESS ESD S3 CI HI SRC

UPPER : Full grain water resistant leather
CODE : JIJ1114 SIZE : 35 - 48

JALCYBER ESD S3 CI HI SRC

UPPER : Full grain water resistant leather
CODE : JIJ1214 SIZE : 35 - 48

- Upper PUTEK® PLUS water resistant
- Lining 3D Surf mesh
- Toe cap Springtane B
- Insole Maxi Soft Duo
- Anti-puncture insert Flextane
- Sole PU/PU





JALELEC ESD S1P CI HI SRC

CODE : JIJ1156 SIZE : 35 - 48



JALMECA ESD S1P CI HI SRC

CODE : JIJ1256 SIZE : 35 - 48



JALCLOUD ESD S1P CI SRC

CODE : JIJ1134 SIZE : 35 - 48



JALDATA ESD S1P CI SRC

CODE : JIJ1234 SIZE : 35 - 48



JALKANBAN ESD S1P CI SRC

CODE : JIJ1166 SIZE : 35 - 48



JALLEAN ESD S1P CI SRC

CODE : JIJ1266 SIZE : 35 - 48

- Upper Smooth suede leather
- Lining 3D Surf mesh
- Toe cap Springtane B
- Insole Maxi Soft Duo
- Anti-puncture insert Flexthane
- Sole PU/PU



ASEPTANE



Aseptane is a resin-soaked microfibre that has many properties:

- + Exceptional waterproofing and breathability
- + Easy to clean and look after
- + Ideal for use in wet and splash-prone environments



JALCALCIUM ESD S2 SRC

CODE : JIJ1282

SIZE : 35 - 48



JALGRAPHITE ESD S2 SRC

CODE : JIJ1272

SIZE : 35 - 48

Upper	Aseptane
Lining	3D Surf mesh
Toe cap	Springtane B
Insole	Maxi Soft Duo
Sole	PU/PU



QuickLio™



QuickLio™ 2 en 1" technical lace loop keeps laces in place for quick lacing and untieability.



JALBUMPER ESD S3 CI SRC

SOLE : PU/PU

CODE : JIJI174

SIZE : 35 - 48



JALTRAILER ESD S3 CI SRC

SOLE : PU/PU

CODE : JIJI184

SIZE : 35 - 48



JALROADSTER S3 CI HI HRO SRC

SOLE : PU/VIBRAM

CODE : JIJI194

SIZE : 35 - 48



JALTRUCK ESD S3 CI SRC

SOLE : PU/PU

CODE : JIJI284

SIZE : 35 - 48

- Upper Full-grain leather with Pull-up finish
- Lining 3D Surf mesh
- Toe cap Springtane B
- Insole Maxi Soft Duo
- Anti-puncture insert Flexthane





J-NUDE 2, better slip resistance and greater flexibility, but still featuring that unparalleled “barefoot” feeling and legendary breathability which made J-NUDE a success.



#UPPER
FRAME

JALKOHA ESD S3 SRC

CODE : 00JNI28 SIZE : 35 - 47



#UPPER
FRAME

JALDOJO ESD S3 SRC

CODE : 00JNI01 SIZE : 35 - 47



#UPPER
FRAME

JALREI ESD S3 SRC

CODE : 00JNI29 SIZE : 35 - 47



#UPPER
FRAME

JALTAI ESD S3 SRC

CODE : 00JNI03 SIZE : 35 - 47

Upper Water-repellent full-grain eather with a pull-up finish and a TPU grid reinforcement

Lining 3D Surf mesh

Toe cap Springtane B

Insole Soft + Gel

Anti-puncture insert Flexthane

Sole J-NUDE 2 PU/PU



SOFT+GEL



LINK-ESD





JALJAB ESD S3 SRC

UPPER : Water-repellent full-grain leather and fabric

CODE : 00JN119 SIZE : 35 - 47



JALCROSS ESD S3 SRC

UPPER : Water-repellent full-grain leather and fabric

CODE : 00JN120 SIZE : 35 - 47



JALATHLON ESD S3 SRC

UPPER : Water-repellent full-grain leather and fabric

CODE : 00JN107 SIZE : 35 - 47



JALCATCH ESD S1P SRC

UPPER : Synthetic nubuck with a breathable fabric insert

CODE : 00JN126 SIZE : 35 - 47

- Lining 3D Surf mesh
- Toe cap Springtane B
- Insole Soft + Gel
- Anti-puncture insert Flexthane
- Sole J-NUDE 2 PU/PU





JALSPACE ESD S3 CI SRC

UPPER : Putek Start light abrasion-resistant and breathable

CODE : JVJV101 SIZE : 35 - 48



JALAERO ESD S3 CI SRC

UPPER : Putek Start light abrasion-resistant and breathable

CODE : JVJV201 SIZE : 35 - 48



JALTAIL ESD S3 CI SRC

UPPER : Light breathable microfiber

CODE : JVJV102 SIZE : 35 - 48



JALWING ESD S3 CI SRC

UPPER : Light breathable microfiber

CODE : JVJV202 SIZE : 35 - 48



JALTOUNDRA ESD S3 CI SRC

UPPER : Recycled Putek Spider

CODE : JVJV207 SIZE : 35 - 48

Lightness is an essential part of **comfort**. Thanks to new ultra-lightweight materials that still offer excellent technical performance, the **HELIUM** collections successfully guarantees the best "durability/weight" ratio by balancing **endurance** at the workplace **and** an **unrivalled feeling of lightness**

The models in the **HELIUM** collection are suitable for less restrictive environments and jobs in transport, logistics, light industry, construction fittings and finishings, retail and services.



JALPATRIOT ESD S3 CI SRC

UPPER : Putek Start light abrasion-resistant and breathable

CODE : JVJV103

SIZE : 35 - 48



JALNATION ESD S3 CI SRC

UPPER : Putek Start light abrasion-resistant and breathable

CODE : JVJV203

SIZE : 35 - 48



JALSTRATO ESD S3 CI SRC

UPPER : Putek Start light abrasion-resistant and breathable

CODE : JVJV206

SIZE : 35 - 48



JALLADY ESD S3 CI SRC

UPPER : Light breathable microfiber

CODE : JVJV204

SIZE : 35 - 42

- **FLEX-LIGHT** composite anti-puncture insert made from non-woven fabric **54% lighter than a standard anti-puncture insert**
- **Light Microfibre** upper whose waterproofing and breathability are comparable to standard leathers
- **PUTEK® STAR Light** upper which guarantees abrasion resistance far beyond any regulatory requirements.



JALPLUME ESD S1P CI SRC

UPPER : Light breathable textile

CODE : JVJV205

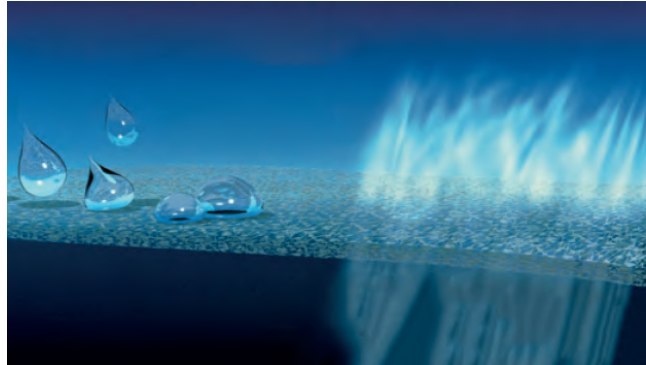
SIZE : 35 - 48

PROTECTION & COMFORT

The GORE-TEX® membrane – the hidden secret at the core of GORE-TEX® Footwear offers high climate comfort in all working weather conditions.

Water stays out while sweat escapes.

GORE-TEX® footwear keep your feet dry and comfortable.



To meet the specific requirements of climate, professional environment, activity level and end use, Gore has special laminates.

Jallatte has chosen Comfort & Performance laminate :

- Durable waterproof
- Breathable
- Moderate thermal insulation for a wide range of temperatures.

Ideal for changing weather and wide range of activities.

PROVEN QUALITY UNDER UNCOMPROMISING TESTING CONDITIONS



WATERPROOFNESS

GORE-TEX® Footwear has to withstand up to 300,000 flex movements (80 hours) in anklehigh water – without allowing one single drop of water to penetrate inside the boot. EN ISO standard 20344 requires only 4800 flexes (80 minutes) and 3 cm² water entry is allowed.



BREATHABILITY

The materials used in GORE-TEX® Footwear achieve a breathability value up to six times higher than the values specified in EN ISO standard 20345/47.



DURABILITY

Inner lining and upper materials of GORE-TEX® Footwear have to withstand up to four times more abrasion movement than specified in by the EN ISO standard.



JALGAND p45
SYNERGY



JALSIBERIEN p50
J-ESCAPE



JALROCHE p50
J-ESCAPE



JALCLIMATE p18
J-ENERGY



JALACER p50
J-ESCAPE



JALPOLE p56
Softane
— Avant-Garde



JALTERRE p50
J-ESCAPE



JALTEX p54
Softane
— Adventure



JALTERRE METAL FREE p50
J-ESCAPE

GORE-TEX® footwear far exceeds the requirements of EN ISO 20345 for
waterproofness, breathability and durability.



The first OUTDOOR energy-saving collection

Codeveloped collection by, and for major players in, the construction, rail transport, cleaning and energy sectors.

The « **SYNERGY** » line is a perfect union between a profile cleat system for outside use and a sole capable of releasing energy.



SYNERGY styles feature a sole with BASF's Infinergy® technology that **returns over 55% of the energy stored** while walking. All this for exceptional **cushioning** and a guaranteed **antifatigue** effect.





The SYNERGY collection is evolving thanks to the PU “scuffcap”, which guarantees superior, optimal protection at the front of the foot. This “scuffcap” allows you to work on your knees without the risk of premature wear and tear of the material on the front of the toe cap.



JALGAND S3 CI WR SRC

UPPER : Full grain water resistant leather finition PULL-UP

LINING : Membrane GORE-TEX®

CODE : JYJY231 SIZE : 38 - 47



JALVISTA S3 CI WR SRC ●

UPPER : PUTEK® PLUS highly resistant to abrasion, water resistant and breathable

LINING : Membrane GORE-TEX®

CODE : JYJY253 SIZE : 38 - 47



JALNORA ESD S3 CI SRC

UPPER : PUTEK® PLUS highly resistant to abrasion, water resistant and breathable

LINING : 3D Surf mesh

CODE : JYJY252 SIZE : 38 - 47

Toe cap PremAlu B

Insole Soft

Anti-puncture insert Flexthane

Sole Triple density with high energy return PU2D/E-TPU Infinergy® from BASF®





JALANGO ESD S3 CI SRC

CODE : JYJY497 SIZE : 38 - 48

BOA® Fit System lets you quickly put on and take off the safety shoes. Traditional laces are replaced with a stainless steel wire connected to a mechanical knob that lets you fasten, lock and unfasten the wire.



This lace-free fastening system prevents the risk of falling and eliminates compression points



JALALTA ESD S3 CI SRC

CODE : JYJY495 SIZE : 35 - 48



JALTANO ESD S3 CI SRC

CODE : JYJY496 SIZE : 35 - 48



QuickLio™ 2 en 1" technical lace loop keeps laces in place for quick lacing and untieability.

- Upper Full-grain leather with Pull-up finish
- Lining 3D Surf mesh
- Toe cap PremAlu B
- Insole Soft
- Anti-puncture insert Flexthane
- Sole Triple density with high energy return PU2D/E-TPU
Infinergy® from BASF®





**ANKLE
PROTECTOR**



JALTARAK S3 CI HI AN SRC

CODE : JY226

SIZE : 35 - 48



JALMUDO S3 CI SRC

CODE : JYJY223

SIZE : 38 - 47



JALFARO S3 CI SRC

LINING : Isotermal

CODE : JYJY224

SIZE : 38 - 47



JALBARAD S3 CI HI SRC

CODE : JYJY222

SIZE : 38 - 47



JALDAGOR S3 CI SRC

CODE : JYJY225

SIZE : 38 - 47

- Upper Full-grain leather with Pull-up finish
- Lining 3D Surf mesh
- Toe cap PremAlu B
- Insole Soft
- Anti-puncture insert Stainless steel
- Sole Triple density with high energy return
PU2D/E-TPU Infinergy® from BASF®



MORE SECURITY, FOR MORE SERENITY, AT ALL TIMES

Vibram® is the world leader in the technological development and manufacture of high-performance rubber soles, for the outdoor, work safety, lifestyle, orthopaedic and repair markets. For more than 80 years, the unmistakable yellow octagon has been the symbol of a company synonymous with **quality, performance, safety, innovation and design.**

From the moment we created the first rubber sole for mountaineering, Vibram® has become a benchmark in the footwear market. Vibram® soles – derived from a desire to **boost safety and protection** – are known all over the world, and are the result of a constant commitment to research and development.

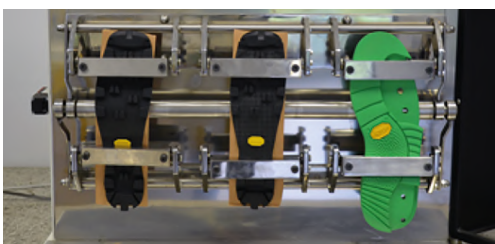


This stroke of genius led to the début of the first soles branded Vibram® – a combination of the inventor’s first name and surname – and the famous Carrarmato sole that revolutionised both mountaineering and the world of footwear, allowing for unprecedented performance in terms of **abrasion resistance, traction and grip.**

The Vibram® story began in 1936, when Vitale Bramani (an Academic of the Italian Alpine Club), on his return from a mountaineering ascent that ended in tragedy (1935), came up with the idea of making footwear soles using the same technique employed for making vehicle tyres.

VIBRAM® TESTS

Each and every Vibram sole must pass 3 levels of testing before it reaches the market. This series of tests ensures the **product quality meets and use requirements.**



LAB TESTS

The physical-mechanical characteristics of the soles are tested by machines. The objective is to measure the resistance of the sole sole to slips, abrasion, elasticity, hardness and density.



IN VIVO TESTS

- Indoor testing on shoes equipped with Vibram® flat soles.
- Tests performed by technicians according to a specific protocol.

The objective is to measure the performance of the gum to rubber.



FIELD TEST

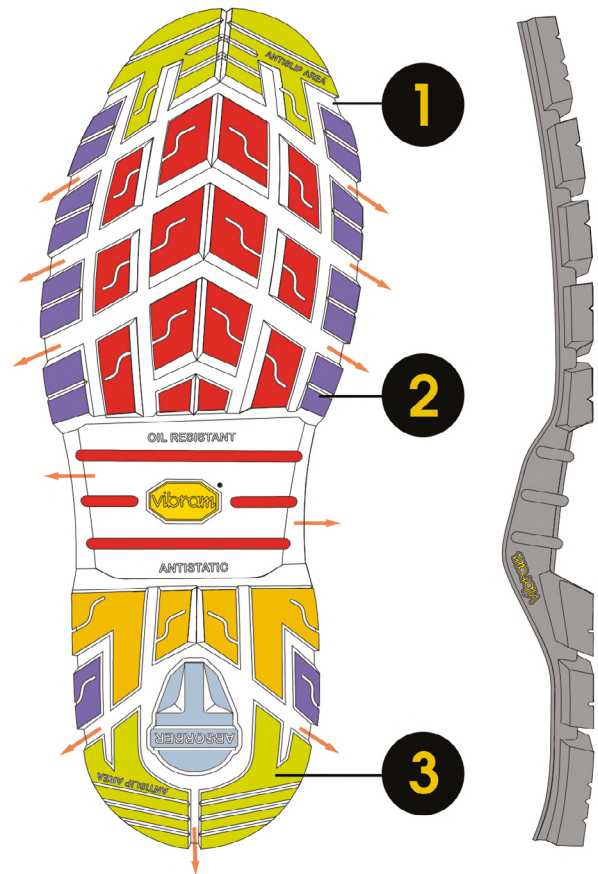
- Indoor Testing on shoes with flat sole design.
 - Run on shoes by humans with scientific protocols ("in vivo")
- Test samples : flat design soles to focus on compound performance Output : trustable compounds comparison.

The secret of Vibram® performance lies in the perfect combination of the **hyperfunctional DESIGN** of the soles and the use of **exclusive RUBBER varieties**.



TRUCKER

1194



■ GRIP
 ■ TRACTION
 ■ BRAKING
 ■ STABILITY
 ■ CUSHIONING
 ➔ SELF-CLEANING



- Engineered for use in a wide range of work and safety environments
- Provides a high level of grip and durability
- Excellent heat and tear resistance

BEST FOR



DESIGN & TECHNOLOGY

- 1 Large contact area for grip on industrial contaminated floors
- 2 Reinforced cleats for stability and durability
- 3 Oil draining channels to enhance grip and safety



0% METAL

JALROCHE S3 CI HI WR HRO SRC

CODE : 00JJV01

SIZE : 38 - 47



JALACER S3 CI HI WR HRO SRC

CODE : 00JJE23

SIZE : 38 - 47



0% METAL

3M **Thinsulate**
INSULATION



Waterproof and maximum grip

JALSIBERIEN S3 CI HI WR HRO SRC

CODE : 00JJV33

SIZE : 38 - 47



0% METAL

QuickLio™

JALTERRE METAL FREE S3 CI HI WR HRO SRC

CODE : 00JJV45

SIZE : 38 - 47



JALTERRE S3 CI HI WR HRO SRC

CODE : 00JJV31

SIZE : 38 - 47

- Upper Pure full-grain leather
- Lining GORE-TEX® Membrane
- Toe cap Springtane B
- Insole Soft
- Anti-puncture insert Flexthane
- Sole Vibram®



PULL-UP



PLEINE FLEUR





**ANKLE
PROTECTOR**



JALIROK S3 CI HI AN HRO SRC

CODE : 00JJE17

SIZE : 38 - 47



JALSALIX S3 CI HI HRO SRC

CODE : 00JJE16

SIZE : 38 - 47



JALBOX S3 CI HI HRO SRC

LINING : Isotermal

CODE : 00JJE19

SIZE : 38 - 47



JALHICKORY S3 CI HI HRO SRC

CODE : 00JJE15

SIZE : 38 - 47



JALKHAYA S3 CI HI HRO SRC

CODE : 00JJE18

SIZE : 38 - 47

- Upper Full-grain leather with Pull-up finish
- Lining 3D Surf mesh
- Toe cap Springtane B
- Insole Soft
- Anti-puncture insert Stainless steel
- Sole Vibram®





JALARCHER S3 CI HI HRO SRC

UPPER : Full grain water resistant leather

LINING : 3D Imola mesh

ANTI-PUNCTURE INSERT : Flexthane

CODE : 00JJV28 SIZE : 38 - 47



JALORKA S3 CI HI AN HRO SRC

UPPER : Full grain water resistant leather

LINING : 3D Surf mesh

ANTI-PUNCTURE INSERT : Stainless steel

CODE : 00JJE58 SIZE : 38 - 47



JALDARK S3 CI HI HRO SRC

UPPER : Full grain water resistant leather

LINING : 3D Surf mesh

ANTI-PUNCTURE INSERT : Flexthane

CODE : 00JJE64 SIZE : 38 - 47

Toe cap Springtane B
 Insole Soft
 Sole Vibram®





Jallatte

vibram



JALTEX S3 CI WR SRC

UPPER : Full-grain leather with Pull-up finish

LINING : Membrane GORE-TEX®

CODE : 00JJV53

SIZE : 38 - 47



JALEBENE S3 CI SRC

UPPER : Full grain water resistant leather

CODE : 00JJE65

SIZE : 38 - 47



JALWENGÉ S3 CI SRC

UPPER : Full grain water resistant leather

CODE : 00JJE70

SIZE : 38 - 47



JALWILLOW ESD S3 CI SRC

UPPER : Full-grain leather with Pull-up finish

CODE : 00JJE63

SIZE : 38 - 47



Excellent leather impermeability no water penetration after 7h of testing

- Lining 3D Surf mesh
- Toe cap Springtane B
- Insole Soft
- Anti-puncture insert Flexthane
- Sole Softane Bi-density





**ANKLE
PROTECTOR**



JALFIR S3 CI AN SRC

CODE : 00JJE41

SIZE : 38 - 47



JALBEECH S3 CI SRC

CODE : 00JJE44

SIZE : 38 - 47



JALCYPRESS S3 CI SRC

LINING : Isotermol

CODE : 00JJE45

SIZE : 38 - 47



JALSEQUOIA S3 CI SRC

CODE : 00JJE42

SIZE : 38 - 47



JALOAK S3 CI SRC

CODE : 00JJE40

SIZE : 38 - 47

Upper	Full-grain leather with
Lining	Pull-up finish
Toe cap	3D Surf mesh
Insole	Springtane B
Anti-puncture insert	Soft
Sole	Stainless steel Softane Bi-density





JALPOLE S3 CI WR SRC

LINING : GORE-TEX® Membrane
ANTI-PUNCTURE INSERT : Stainless steel
CODE : 00JJS11 SIZE : 37 - 48



0%
METAL

JALFRIGG S3 CI SRC

LINING : Isotermal
CODE : 00J0652 SIZE : 35 - 48



0%
METAL

JALHAKA S3 SRC

CODE : 00J0650 SIZE : 35 - 48



0%
METAL

JALOSBERN S3 SRC

CODE : 00J0662 SIZE : 35 - 48



- Upper Natural full grain leather
AP23™, Water and oil repellent
- Toe cap Springtane B
- Insole Soft
- Anti-puncture insert Flexthane
- Sole Softane Bi-density





JALOSBERN STEEL S3 SRC

INSOLE : Soft

CODE : 00JJB21

SIZE : 35 - 48



JALOSBERN WINTER STEEL S3 CI SRC

LINING : Isotermal

INSOLE : Soft

CODE : 00JJB22

SIZE : 35 - 48



JALBORG STEEL S3 CI HI SRC

LINING : 3D Surf mesh

INSOLE : Soft + Gel

CODE : 00J0701

SIZE : 35 - 48

MAXIMUM SAFETY
FOR ALL 3 MODELS :

Flextane HP
Inox Steel

Double anti-puncture :
Flextane + Stainless steel

Upper Natural full grain leather
AP23™, Water and oil repellent

Toe cap Springtane B

Anti-puncture insert Flextane and Stainless steel

Sole Softane Bi-density



Springtane B





PLEINE FLEUR

Full-grain leather AP23™, exclusive to Jallatte, **100% natural**, it is **water** and **oil repellent**.

Compared to the majority of leathers used in safety footwear, it has an increased thickness of between 10% and 15% (2.4 mm), which ensures excellent durability.

In addition, its **water-repellent potential** far exceeds the one required by European standards (12 hours of water repellency).



JALASKA S3 SRC

UPPER : Natural full grain leather AP23™,
Water and oil repellent
LINING : Nonwoven fabric
CODE : 00J0266 SIZE : 36 - 48



JALARTIC S3 CI SRC

UPPER : Natural full grain leather AP23™,
Water and oil repellent
LINING : Isotermal
CODE : 00J0257 SIZE : 36 - 48



JALMONT BETON EVOL SAS S3FO SR

UPPER : Full-grain leather, resistant to active
cement agents
LINING : 3D Surf mesh
CODE : 00J0254 SIZE : 36 - 48



JALMONT EVOL SAS S3FO SR

UPPER : Water-repellent full-grain leather
with grained finish
LINING : Synthetic
CODE : 00J0255 SIZE : 36 - 48



JALMATCH S1P SRC

UPPER : Smooth perforated suede leather
LINING : 3D Imola mesh
CODE : 00J0351 SIZE : 36 - 47



- Toe cap Steel Aérfort 200J
- Insole Confort Tech
- Anti-puncture insert Stainless steel
- Sole Softane Bi-density





JALEREC S3 SRC

UPPER : Full-grain leather with Pull-up finish
 CODE : 00JMJ07 SIZE : 35 - 47



JALGERAINT S3 SRC

UPPER : Full grain water resistant leather
 CODE : 00JMJ06 SIZE : 35 - 47



JALGAHERIS S3 SRC

UPPER : Full grain water resistant leather
 CODE : 00JMJ04 SIZE : 38 - 47



- Lining 3D Imola mesh
- Toe cap Springtane 200J
- Insole Soft
- Anti-puncture insert Flexthane
- Sole Softane Bi-density



PLEINE FLEUR



Springtane B





JALELITE S3 CI HI HRO SRC

CODE : JYJY507 SIZE : 35 - 48



JALMAGMA S3 CI HI HRO WG SRC

CODE : JYJY506 SIZE : 38 - 48



JALPLASMA S3 CI HI HRO WG SRC

CODE : JYJY505 SIZE : 38 - 48



JALTIG S3 CI HI HRO WG SRC

SOLE : Triftane X Vibram®

INSOLE : Soft + Gel

CODE : JXJX912 SIZE : 35 - 48



The **Vibram® sole** offers a high level of grip and durability as well as excellent resistance to heat and tears.

The **WG* Standard** guarantees that the upper can withstand small molten metal splashes.

**Test conducted according to the requirements of standard EN ISO 20349-2:2017 + A1:2020*



- Upper Full-grain leather with Pull-up finish
- Lining 3D Surf mesh
- Toe cap PremAlu B
- Insole Soft
- Anti-puncture insert Flexthane
- Sole Triple density PU / BASF® Infinergy® E-TPU with high energy return / Vibram®





JALMARS S3 HRO SRC

UPPER : Pure full-grain leather
 LINING : 3D Imola mesh
 ANTI-PUNCTURE INSERT : Stainless steel
 CODE : 00J0246 SIZE : 36 - 47



JALSCAND S3 HRO SRC

UPPER : Pure full-grain leather
 LINING : 3D Imola mesh
 ANTI-PUNCTURE INSERT : Stainless steel
 CODE : 00J0248 SIZE : 36 - 47



SPECIFIC COATED



JALTARMAC S3 HI HRO SRC

UPPER : Full grain water resistant leather
 LINING : Leather
 ANTI-PUNCTURE INSERT : Stainless steel and Isoltane
 CODE : 00J0250 SIZE : 38 - 47



ASEPTANE

JALBIO S2 HRO SRC

UPPER : Aseptane, waterproof and breathable
 LINING : Fabric
 CODE : 00J0271 SIZE : 35 - 47

Toe cap Steel Aérfort 200J
 Insole Confort Tech
 Sole Triftane™ Vibram®





Soltane
by Fallato

The first collection of energy-saving safety footwear

J-PRO is 20347 compliant (without safety toecap) but goes far beyond the standard requirements set out by the standard, as all styles in the collection incorporate additional **A**, **E**, **WRU**, **FO**, **SRC** and **ESD** requirements.



Antistatic electrical resistance



Energy absorption at heel



Water repellent upper



Resistance of sole to hydrocarbons



SRC Slip resistance



ESD



More than 55% in terms of energy stored during walking **exceptional cushioning** and a guaranteed **anti-fatigue effect**.

Xtensible™

Xtensible™ non-tied elastic laces with adjustable Stop-Lace lock :

- * Eliminates the feeling of having swollen feet
- * Allows them to be put on and taken off rapidly
- * Reduces the risk of falling



Speed, safety, comfort and **hygiene** at the service of the workers.



LIGHT



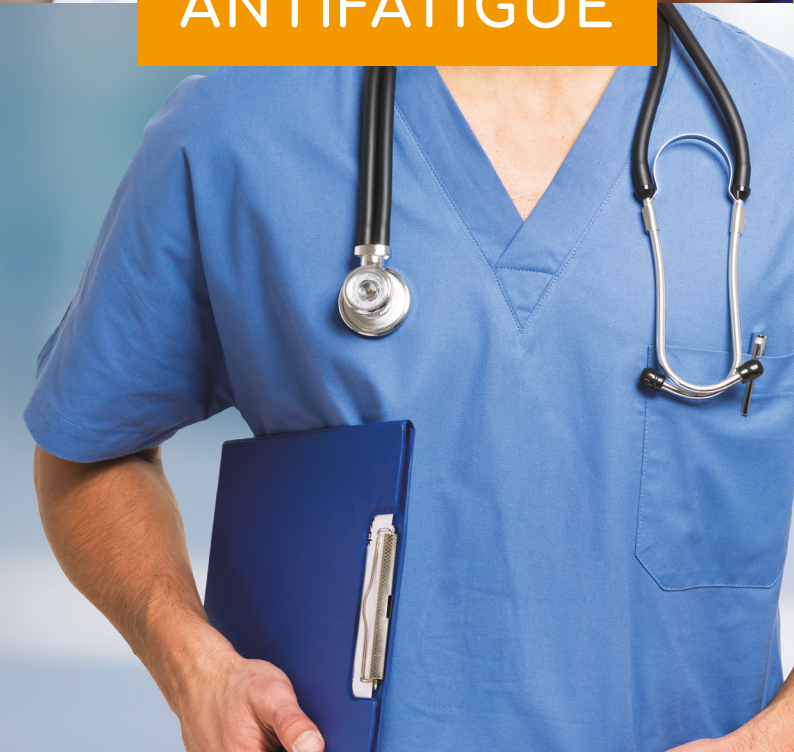
FLEXIBLE



ANTIFATIGUE



ANTI-SLIP





JALSALT ESD O2 FO SRC

LINING : 3D Roma mesh

CODE : JOJO205 SIZE : 35 - 48



ASEPTANE

JALLABO ESD O2 FO SRC

UPPER : Breathable and waterproof microfiber

LINING : 3D Roma mesh

CODE : JOJO213 SIZE : 35 - 48



JALNIGEL ESD O2 FO SRC

LINING : 3D Surf mesh

CODE : JOJO212 SIZE : 35 - 48



JALPEPPER ESD O2 FO SRC

LINING : 3D Surf mesh

CODE : JOJO204 SIZE : 35 - 48



SAKINA ESD O2 FO SRC

LINING : 3D Surf mesh

CODE : JOJO201 Size : 35 - 42

- Upper** PUTEK® PLUS highly resistant to abrasion, water resistant and breathable
- Insole** Soft + Gel
- Sole** Triple density with high energy return PU2D/E-TPU Infinergy® from BASF®



Link-ESD



SOFT+GEL





JALBOSS ESD O2 FO SRC

UPPER : PUTEK® PLUS highly resistant to abrasion, water resistant and breathable

LINING : 3D Surf mesh

CODE : JOJO210 SIZE : 38 - 48



JALDEREK ESD OB A E WRU FO SRC

LINING : 3D Surf mesh

CODE : JOJO208 SIZE : 35 - 48



MEREDITH ESD OB A E WRU FO SRC

LINING : 3D Surf mesh

CODE : JOJO206 SIZE : 35 - 42



MIRANDA ESD OB A E WRU FO SRC

LINING : Maille 3D Imola

CODE : JOJO207 SIZE : 35 - 42



Upper Microfiber Aseptane
 Insole Soft + Gel
 Sole Triple density with high energy return PU2D/E-TPU Infinergy® from BASF®

Link-ESD

ASEPTANE



SOFT+GEL



FOOTBED

SOFT



SOFT

SIZE : 35 - 48

CODE : JS 00002

SOFT+GEL



SOFT + GEL

SIZE : 35 - 48

CODE : JS 00003

Maxi SOFT Duo



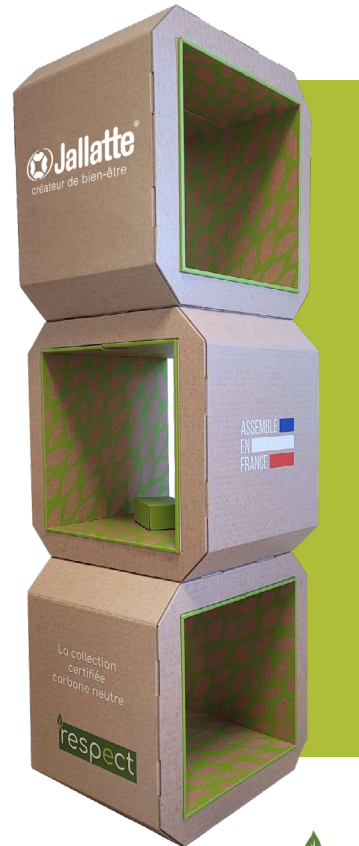
MAXI SOFT DUO*

SIZE : 35 - 48

CODE : JS 00004

**Only for the models J-INDUSTRY and J-INDUSTRY labelled RESPECT*

J'RESPECT FURNITURE



3 MODULE CARDBOARD PODIUM

MEASUREMENTS : L46 x H138 cm

CODE : ES00141

J-EXPO FURNITURE

New Jallatte® ecological & sustainable furniture



Assembly quick & easy



PODIUM DUO MOBILE

HIGH MOBILE

MEASUREMENTS : L58,2 x H105,7 x B40 cm
CODE : ES00118

LOW MOBILE

MEASUREMENTS : L58,2 x H65,2 x B40 cm
CODE : ES00117



4 FOOT DISPLAY STAND

MEASUREMENTS : L40 x H178,1 x B37,5 cm
CODE : ES00115



SHELVING WITH WHEELS

MEASUREMENTS : L111,4 x H198,1 x B37,7 cm
CODE : ES00116

UPPER



Water-repellent full-grain leather



Velvety-appearance leather that is **soft** and **breathable**



Suede leather, **soft** and **excellent breathability**



Water-repellent full-grain leather with a pull-up finish. **Very waterproof**



AP23™ leather, exclusive Jallatte, **100% natural**, it is **water** and **oil repellent**. 10% to 15% thicker than most of the leathers used for safety footwear (2,4mm), ensuring excellent durability. Moreover, its properties of **resistance to penetration of water** vapor exceed the minimum values required by the European standard



Water-repellent full-grain leather with pull-up finish. **Excellent waterproofing** of the leather, not even a drop of water after 7 hours of testing.



Putek® plus Technology uses newly developed **high resistance abrasion** yarns, woven directly into the fabric, to obtain high-tenacity and high-performance abrasion resistant fabrics.

These highly **resistant and water-repellent** fabrics allow the creation of **ultralight and ultra-breathable** S3 products



- Special fiber that thanks to a specific finish features unique qualities :
- Exceptional **impermeability and breathability**
- Resistance to **washing** (even at 30 °)
- Incredible **ease of cleaning and maintenance**



Technology consisting of a superstructure grid made of TPU and designed for an **enhanced support of the upper**. Promoting the "**seamless**" concept, it contributes to an increased durability of the shoes



Technical 100% polyester fabric, **highly abrasion resistant and ultra-breathable** for a long life and optimum comfort for the foot

LINING



A GORE-TEX® membrane is an **extremely thin** layer of expanded polytetrafluoroethylene (ePTFE). It contains more than 1.4 billion pores per cm². All these pores guarantee the properties of GORE-TEX® fabrics. It is only 0.01 mm thick. It is attached to a lining or a **high-performance outer fabric**, which results in a GORE-TEX® laminate.



Breathable thermal insulating lining designed to ensure the perfect balance inside the shoe in any condition the perfect equilibrium inside the footwear. It keeps you cool in summer and warm in winter.



3D mesh lining, that is technical, **innovative and anti-bacterial**, capable of combining **high performance breathability** and **abrasion resistance** with a feeling of softness and comfort. Its special 3-layer structure promotes thermoregulation to keep the foot dry and in complete comfort.



3D mesh lining, made using three-dimensional fabric and combined with a foam to ensure **protection and comfort**, in addition to an open structure (grille) **required for peripheral ventilation of the foot**.

The lining has a specially designed honeycomb structure and uses micro ventilation channels to ensure **high levels of breathability**. It is also **resistant to abrasion**, tearing and cutting.



3D mesh lining, with micro-ventilation technology, smooth appearance, 3-layer structure consisting of a textile mesh, foam and reinforcement grille. **High mechanical strength** (abrasion and tearing) and **rapid drying**.

TOE CAP



Steel toe cap resistant to 200 J. Perforated for **increased breathability**



Lightweight, non-magnetic 200J aluminium toe cap. While providing the same **strength**, it is **51% lighter than a steel toe cap**. More **resistant to impact and possible compression**, the B toe cap meets the higher requirements of the new EN ISO 22568-4:2020 standard (new requirements and test methods for footwear components).



Synthetic polymer toe cap, resistant to 200 J, **non-magnetic** and **non-thermal**. **Memory foam** toe cap, it returns to its original shape in the event of crushing, thus facilitating the release of the foot. More **resistant to impact and possible compression**, the B toe cap meets the higher requirements of the new EN ISO 22568-4:2020 standard (new requirements and test methods for footwear components).

INSOLE

SOFT



SOFT insole made using BASF® dynamic polyurethane with **memory foam**, that is **heat-sensitive** and active over the entire surface of the foot.

It is right beneath the soles of the feet that SOFT **improves weight distribution** by cushioning pressure points and allowing **positive energy to be returned**.

SOFT+GEL



Bi-material comfort insole : SOFT+GEL consisting of :

- a SOFT insert made using BASF® Dynamic polyurethane with memory foam, which is **heat-sensitive** and active over the entire surface of the foot.

It is right beneath the soles of the feet that SOFT **improves weight distribution** by cushioning pressure points and allowing **positive energy to be returned**.

- a two-zone GEL insert with **high cushioning capability** at the heel and anatomical extension beneath the midfoot.

Its design allows for **improved heel shock cushioning** while still providing **excellent sole support**.

Maxi SOFT Duo



This **removable** insole is made of 2 materials :

- A 'SOFT' BASF® dynamic polyurethane layer including memory foam, which is heat-sensitive and active over the entire surface of the foot.

Under the soles of the feet, SOFT **improves weight distribution** by reducing pressure points and the feeling of discomfort.

- An integrated 'MAXI'-size anti-fatigue insert made of BASF® Elastopan, an elastomer that is used in anti-fatigue mats.

Positioned beneath the base layer, this MAXI insert **cushions and alleviates stress on the body**, which is forced to stand upright for many hours a day, both while in motion and while walking, thus **reducing the risk of MSDs** (musculoskeletal disorders) in the lower limbs.



Lined with an **anti-bacterial, breathable fabric**, and reinforced in the heel area for improved **shock absorption**.

- Anatomical
- Removable
- Antistatic
- Covers 100% of the foot surface

ANTI-PUNCTURE INSERT



Extra soft textile inlay made of **high-strength** fabric :

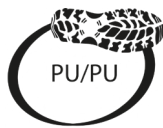
- Strength 1.100N
- Non-magnetic
- Athermic
- Complies with EN ISO 22568-4:2020 standards
- Covers 100% of the foot surface



Anti-perforation midsole in stainless steel :

- Strength 1.100 N
- Maximum protection

SOLE



J-nude 2 J-INDUSTRY

PU/PU

BASF PU/PU sole with a **sporty, urban sport** featuring a linear profile and **excellent slip-resistance**.



J-ENERGY

PU2D/E-TPU Infinergy of BASF

Designed with an innovative material used in the **world of running**, this **triple density sole** ensures dynamic performance in 3 phases : **shock absorption, energy storage and dynamic return**. They are ideal for all those who are subject to frequent movements and who travel long distances daily.



J-HOP!

PU/PU Extra-Rebound 41,5% by BASF

With over **40% energy resistance** over the entire surface, both in the support phase and in the thrust phase, this PU/PU Extra-Rebound 41,5% by BASF sole brings **lightness, wellness and comfort, reducing the feeling of tiredness** both in an upright position and in prolonged activity situations.



TAPIS ROUGE

PU2D/Elastopan by BASF

This triple density sole made with a revolutionary elastomer used for the production of **antifatigue** mats distributes the plantar pressures; it is able to **absorb and relieve body stress by reducing the traumas** associated with a prolonged static working position. Ensures high performance in terms of comfort, balance and shock distribution.



TRIFTANEX 

TRIFTANE X is equipped with a **new Vibram® sole**, which guarantees more **durability** and **better resistance to slipping** and on **hot surfaces**.



J-ESCAPE SPECIALS

Decades of **experience** and **excellence** in sport and mountaineering at the service of the working world today. The Vibram rubber sole is suitable for every situation, light but **extremely resistant** and performing even in **extreme conditions**.



Softane Softane Softane Softane

Tradition Avant-Garde Prestige Adventure

The special **bi-density polyurethane** SOFTANE is designed to achieve the perfect balance between **comfort, lightness and durability**. The midsole is developed with a density such as to ensure flexibility and absorption of vibrations and impacts with the ground, while the outsole is designed to **resist to abrasion, hydrocarbons, oils and grease**.



TRIFTANE
Excellence



The Vibram Triftane sole made from high-performance rubber guarantees better mechanical resistance to abrasion, detachment and tears. It brings a higher level of grip to reduce the risk of slipping, but also better protection against hot floors (HRO certification/resistance to hot contact up to 300°C).

VARIOUS



BOA® Fit System is a rapid, easy and accurate lacing system with no need for laces. **Eliminates the risk of falls** and untying laces.



Xtensible™ non-tied elastic laces with adjustable Stop-Lace lock :

- * Eliminates the feeling of having swollen feet
- * Allows them to be put on and taken off rapidly
- * **Reducing risk of fall**

Speed, safety, comfort and hygiene at the service of the workers



QuickLio™ Technical "2 in 1" lace loop: holds laces in place for **quick lacing** and **untie**.



TPU cushioned insert positioned on the ankle area enabling the **full protection of the ankle bones** against possible side impacts. Conforms to the additional standards (AN) of EN ISO 20345:2011.

Innovative "multi-contact" seamless system on the insole for **dissipating electrostatic charge**.



Thanks to LINK-ESD™, you will feel, step by step, as if you were connected to the ground thanks to a device certified according to the EN 61340-4-3 and EN 61340-5-1 standards, which ensures the **total absence of risks associated with possible electrical discharges harmful** to electronic and computer equipment.

Internal orthopaedic insole approved for safety footwear in accordance with DGUV 112-191 on the use of foot and knee protection.

DGUV 112-191 certification allows the replacement of the insole supplied by Jallatte with a SECOSOL® orthopaedic insole manufactured by Hartmann Matthias Orthopädie und Sport GmbH laboratories in Dillenburg, Germany.



Patented technology



Patent application filed

MODEL	STANDARD REQUIREMENTS	CODE	PAGE
INES ESD	S1P SRC	JYJY211	24
JALACER	S3 CI HI WR HRO SRC	00JJE23	52
JALACTIVE ESD	S1P CI SRC	JYJY102	22
JALADRIA ESD	S1P SRC	JHJH304	29 ●
JALAERO ESD	S3 CI SRC	JVJV201	42
JALALTA ESD	S3 CI SRC	JYJY495	48
JALANGO ESD	S3 CI SRC	JYJY497	48
JALARCHER	S3 CI HI HRO SRC	00JJV28	54
JALARTEMIS	S1P HRO SRC	JXJX902	31 ●
JALARTIC	S3 CI SRC	00J0257	61
JALASKA	S3 SRC	00J0266	61
JALATHLON ESD	S3 SRC	00JNI07	41
JALAUBIER ESD	S3 CI HI SRC	JYJY464	12
JALBARAD	S3 CI HI SRC	JYJY222	49
JALBASALT ESD	S3 CI SRC	JIJ1534	11
JALBEECH	S3 CI SRC	00JJE44	57
JALBIO	S2 HRO SRC	00J0271	64
JALBOMBER ESD	S3 CI SRC	JYJY498	18
JALBORG STEEL	S3 CI HI SRC	00J0701	59
JALBOSS ESD	02 FO SRC	JOJ0210	69
JALBOX	S3 CI HI HRO SRC	00JJE19	53
JALBUMPER ESD	S3 CI SRC	JIJ1174	39
JALCALCIUM ESD	S2 SRC	JIJ1282	38
JALCARBO ESD	S3 SRC	JYJY217	23
JALCATCH ESD	S1P SRC	00JNI26	41
JALCERES ESD	S1P SRC	JHJH301	29 ●
JALCLIMATE	S3 CI WR SRC	JYJY137	20
JALCLOUD ESD	S1P CI SRC	JIJ1134	37
JALCROSS ESD	S3 SRC	00JNI20	41
JALCYBER ESD	S3 CI HI SRC	JIJ1214	36
JALCYPRESS	S3 CI SRC	00JJE45	57
JALDAGOR	S3 CI SRC	JYJY225	49
JALDARK	S3 CI HI HRO SRC	00JJE64	54
JALDATA ESD	S1P CI SRC	JIJ1234	37
JALDENIRO	S1P SRC	JYJY501	19
JALDEREK ESD	OB A E WRU FO SRC	JOJ0208	69
JALDIDO ESD	S3 CI SRC	JHJH309	27
JALDOJO ESD	S3 SRC	00JNI01	40
JALDYNAM ESD	S3 CI SRC	JYJY103	20
JALEBENE	S3 CI SRC	00JJE65	56
JALECO ESD	S3 CI SRC	JIJ1434	10
JALELEC ESD	S1P CI HI SRC	JIJ1156	37
JALELITE	S3 CI HI HRO SRC	JYJY507	63
JALEREC	S3 SRC	00JMJ07	62
JALEVA ESD	S3 CI SRC	JHJH307	28
JALFARO	S3 CI SRC	JYJY224	49
JALFIDES ESD	S1P SRC	JHJH401	29 ●
JALFIR	S3 CI AN SRC	00JJE41	57

MODEL	STANDARD REQUIREMENTS	CODE	PAGE
JALFLASH ESD	S3S CI FO SR	JYJY189	18
JALFOREST ESD	S3 CI SRC	JYJY454	13
JALFRIGG	S3 CI SRC	00J0652	58
JALFUTURE ESD	S3 CI SRC	JIJ1414	10
JALGABBRO ESD	S2 FO SR	JIJ1522	11
JALGAHERIS	S3 SRC	00JMJ04	62
JALGALLIA ESD	S1P SRC	JHJH404	29 ●
JALGAND	S3 CI WR SRC	JYJY231	47
JALGEAR ESD	S3 CI SRC	JYJY232	21
JALGEAR-TR ESD	S3 CI SRC	JTJT705	33 ●
JALGERAINT	S3 SRC	00JMJ06	62
JALGRAPHITE ESD	S2 SRC	JIJ1272	38
JALGROVE ESD	S3 CI SRC	JYJY444	13
JALHAKA	S3 SRC	00J0650	58
JALHICKORY	S3 CI HI HRO SRC	00JJE15	53
JALHIPPO ESD	S3 CI SRC	JHJH406	28
JALHYBRIS ESD	S3 CI SRC	JHJH408	27
JALHYDRO ESD	S3 CI SRC	JYJY484	12
JALHYGIE ESD	S3 SRC	JYJY216	23
JALHYRA	S3 CI HRO SRC	JXJX907	31
JALIDA ESD	S1P SRC	JHJH302	29 ●
JALINO	S3 CI HRO SRC	JXJX006	31
JALIROK	S3 CI HI AN HRO SRC	00JJE17	53
JALJAB ESD	S3 SRC	00JNI19	41
JALJUNO ESD	S3 CI SRC	JHJH306	28
JALKALLISTO ESD	S3 CI SRC	JHJH409	27
JALKANBAN ESD	S1P CI SRC	JIJ1166	37
JALKHAYA	S3 CI HI HRO SRC	00JJE18	53
JALKOHAI ESD	S3 SRC	00JNI28	40
JALLABO ESD	02 FO SRC	JOJ0213	68
JALLADY ESD	S3 CI SRC	JVJV204	43
JALLEAN ESD	S1P CI SRC	JIJ1266	37
JALLIBER ESD	S3 CI SRC	JYJY474	12
JALMAGMA	S3 CI HI HRO WG SRC	JYJY506	63
JALMARS	S3 HRO SRC	00J0246	64
JALMATCH	S1P SRC	00J0351	61
JALMECA ESD	S1P CI HI SRC	JIJ1256	37
JALMETIS ESD	S3 CI SRC	JHJH308	27
JALMONT EVOL SAS	S3 FO SR	00J0255	61
JALMONT BETON EVOL	S3 FO SR	00J0254	61
JALMUDO	S3 CI SRC	JYJY223	49
JALNANO ESD	S3 CI SRC	JIJ1224	36
JALNATION ESD	S3 CI SRC	JVJV203	43
JALNATURE ESD	S3 CI SRC	JIJ1424	10
JALNIGEL ESD	02 FO SRC	JOJ0212	68
JALNORA ESD	S3 CI SRC	JYJY252	47
JALO2 ESD	S1P CI SRC	JIJ1446	10
JALOAK	S3 CI SRC	00JJE40	57

MODEL	STANDARD REQUIREMENTS	CODE	PAGE
JALONYX ESD	S3 CI SRC	JJI544	11
JALORKA	S3 CI HI AN HRO SRC	00JJE58	54
JALOSBERN	S3 SRC	00J0662	58
JALOSBERN STEEL	S3 SRC	00JJB21	59
JALOSBERN WINTER STEEL	S3 CI SRC	00JJB22	59
JALOXY ESD	S1P CI SRC	JJI556	11
JALPACINO	S3 CI SRC	JYJY500	19
JALPATRIOT ESD	S3 CI SRC	JVJV103	43
JALPEPPER ESD	02 FO SRC	JOJ0204	68
JALPEPS ESD	S1P CI SRC	JYJY201	22
JALPERFECT ESD	S3 CI SRC	JYJY251	18
JALPLASMA	S3 CI HI HRO WG SRC	JYJY505	63
JALPLUME ESD	S1P CI SRC	JVJV205	43
JALPOLE	S3 CI WR SRC	00JJS11	58
JALPOLYXO	S3 CI HRO SRC	JXJX906	31
JALPROCESS ESD	S3 CI HI SRC	JJI114	36
JALPULSE ESD	S3 CI SRC	JYJY104	20
JALPULSE-TR ESD	S3 CI SRC	JTJT803	33
JALPUNCH ESD	S1P CI SRC	JYJY101	22
JALPURE ESD	S3 CI SRC	JYJY250	18 ●
JALPYTHON ESD	S3 CI SRC	JJI244	36
JALQUARTZ ESD	S2 FO SR	JJI512	11
JALREI ESD	S3 SRC	00JNI29	40
JALRIVER ESD	S3 CI SRC	JYJY494	12
JALROADSTER	S3 CI HI HRO SRC	JJI194	39
JALROCHE	S3 CI HI WR HRO SRC	00JJV01	52
JALRUN ESD	S1P CI SRC	JYJY202	22
JALRUN-TR ESD	S1P SRC	JTJT701	33 ●
JALSALIX	S3 CI HI HRO SRC	00JJE16	53
JALSALT ESD	02 FO SRC	JO205	68
JALSCAND	S3 HRO SRC	00J0248	64
JALSEQUOIA	S3 CI SRC	00JJE42	57
JALSIBERIEN	S3 CI HI WR HRO SRC	00JJV33	52
JALSKIN ESD	S3 CI SRC	JYJY234	21
JALSOLID ESD	S3 CI SRC	JYJY134	21
JALSPACE ESD	S3 CI SRC	JVJV101	42
JALSPRING ESD	S3 CI SRC	JYJY203	20
JALSTAR ESD	S3S CI FO SR	JYJY289	18
JALSTRATO ESD	S3 CI SRC	JVJV206	43
JALTAÏ ESD	S3 SRC	00JNI03	40
JALTAIL ESD	S3 CI SRC	JVJV102	42
JALTANO ESD	S3 CI SRC	JYJY496	48
JALTARAK	S3 CI HI AN SRC	JYJY226	49
JALTARMAC	S3 HI HRO SRC	00J0250	64
JALTEA	S3 CI HRO SRC	JXJX007	31 ●
JALTECHNO ESD	S3 CI SRC	JJI124	36
JALTERRE	S3 CI HI WR HRO SRC	00JJV31	52
JALTERRE METAL FREE	S3 CI HI WR HRO SRC	00JJV45	52

MODEL	STANDARD REQUIREMENTS	CODE	PAGE
JALTEX	S3 CI WR SRC	00JJV53	56
JALTHIA ESD	S1P SRC	JHJH402	29 ●
JALTIG	S3 CI HI HRO WG SRC	JXJX912	63
JALTONIC ESD	S3 CI SRC	JYJY204	20
JALTONIC-TR ESD	S3 CI SRC	JTJT703	33
JALTOUNDRA ESD	S3 CI SRC	JVJV207	14
JALTRAILER ESD	S3 CI SRC	JJI184	39
JALTREE ESD	S3 CI SRC	JYJY434	13
JALTRUCK ESD	S3 CI SRC	JJI284	39
JALTURBO ESD	S3 CI SRC	JYJY132	21
JALTURBO-TR ESD	S3 CI SRC	JTJT805	33 ●
JALURANIA ESD	S3 CI SRC	JHJH407	28
JALVISTA	S3 CI WR SRC	JYJY253	47 ●
JALVIVO ESD	S3 CI SRC	JJI447	10
JALWAVE ESD	S3 CI SRC	JYJY499	18
JALWENGE	S3 CI SRC	00JJE70	56
JALWILLOW ESD	S3 CI SRC	00JJE63	56
JALWING ESD	S3 CI SRC	JVJV202	42
LAIA ESD	S1P CI SRC	JYJY212	24
MEREDITH ESD	0B A E WRU FO SRC	JOJ0206	69
MIKY ESD	S3 CI SRC	JYJY109	24
MIRANDA ESD	0B A E WRU FO SRC	JOJ0207	69
NOA ESD	S3 CI SRC	JYJY209	24
SAKINA ESD	02 FO SRC	JOJ0201	68

● DISCONTINUED ITEM



Despite a revision of EN ISO 20345 in 2022, EN ISO 20345:2011 is still valid for new certification until November 11, 2024. Therefore, all certificates issued up to this date will be valid for 5 years, i.e. until November 11, 2029. During this transition period, the two versions of the standards will coexist. In our next 2024 catalog, we'll be unveiling all aspects of these new standards requirements, the new CE markings markings and their impact on the technological and safety choices of our collections.

CATEGORIES		FUNDAMENTAL REQUIREMENTS		ADDITIONAL REQUIREMENTS	SYMBOLS
EN ISO 20345:2011 Toe 200 J/15kN	EN ISO 20347:2012	Class I (shoe)	Class II (boot)		
SB		●	●		
S1		●		Closed heel area Antistatic properties Energy absorption in the heel	A E
	01	●		Resistance of the sole to hydrocarbons	FO
S2	02	●		Same as S1/01 plus: resistance to water penetration	E/FO WRU
S3	03	●		same as S2/02 plus: resistance to perforation. Cleated soles	A/E/WRU/ FO/P

ADDITIONAL SYMBOLS USED		REQUIRED MINIMUM VALUES EN ISO 20345:2011 + EN ISO 20347:2012
Resistance to perforation	P	≥ 1100 Newton
Electric resistance: - Antistatic - Conductive	A C	between 1x10 ⁵ Ω a 1x10 ⁹ Ω < 1x10 ⁹ Ω
Resistant to harsh environments : - Cold isolation - Heat isolation	CI HI	by temperature < 10°C by temperature > 22°C
Resistance of the sole against contact heat	HRO	contact at 300°C for 60 secs – no melting
Resistance of the sole Against hydrocarbons	FO	always present by EN ISO 20345:2011 and by EN ISO 20346:2011 but to be specified when required by EN ISO 20347:2012
Energy absorption capacity in the heel area	E	≥ 20 Joule
Resistance of the whole shoe to water penetration	WR	no penetration within first 15 mins. After 100 flex should not penetrate more than 3 square Cm
Resistance of the upper to water penetration	WRU	> 60 mins - Absorbance < 30%
Ankle protection	AN	average value > 20kN
Shoe with metatarsal protection	M	height after shock > 40 mm (tg 42)
Cut resistant upper	CR	I factor > 2,5
Features spiked soles	NO SYMBOL	Stud height >=2,5 cm

Slip resistance of the sole Regulation: EN ISO 20345:2011 / 20347:2012

Marking symbol	Required conditions provided by the regulation
SRA Test surface: ceramics Lubricant: water and detergent	≥ 0.32 flat footwear ≥ 0.28 footwear inclined 7° towards the heel
SRB Test surface: stainless steel lubricant: Glycerin	≥ 0.18 flat footwear ≥ 0.13 footwear inclined 7° towards the heel
SRC	Both above described conditions required

Personal Safety Equipments (P.P.E.) are ruled by two European regulations:

- the 89/686 CE which defines the obligations of the producer
- the 89/656 CE relating to the use, which defines the obligations of the companies and the workers.

Safety, protectional and professional footwear are identified as Personal Safety Equipments

OBLIGATIONS OF THE PRODUCER

By purchasing Jallatte® products you are assured that all footwear have met the certification procedures based on the European regulations, as shown by the CE marking. Each box contains an informative note of use which establishes the risks covered. For every model, Jallatte® issues a declaration of conformity.

OBLIGATIONS OF THE COMPANIES AND THE WORKERS

besides the priority of collective protection, the directive establishes an obligation of health and safety. The employers must:

- locate the risks which cannot be avoided through collective protection

- select the P.P.E. suitable and appropriate to the risks, in consultation with the R.S.P.P.
- select the P.P.E. compatible with the types of work to be executed and with the principles of ergonomics
- make the P.P.E. available to the workers
- monitor actual usage
- provide the P.P.E. for free and for personal use
- ensure the proper functioning, the hygienic status and maintenance
- proceed or o carry out periodical general checks for some categories of P.P.E.
- ensure information, education, instruction, training of the use of P.P.E. And the risks covered
- prepare a delivery note of the P.P.E. For the worker

And further:

- the P.P.E. are not to be considered prizes in kind
- the responsibility of the worker is only disciplinary (omission to wear the protections) and is subordinated to a criminal matter responsibility of the employer

THE CERTIFICATION PROCEDURES

All Jallatte® footwear belongs to class II (protection against severe risks). Therefore all footwear is submitted to the specific CE examination at an enabled body at a European level'.

Basing on the analyses and the executed tests for this type in conformity to the regulation EN ISO 20344:2011, on the technical documentation and the informative note of use, a CE attestation is released, valid in whole Europe.

Notes

It is forbidden to affix on a P.P.E., on it's box and on any other pertinent document any brand or writing susceptible to create confusion with the markings provided within the framework of the certification procedures in conformity with Art. R233.50.1

This catalogue replaces all previous documents.

With the aim to improve our collections, all products included in this catalogue may be replaced and/or modified.

Images are for illustration purposes only and are not legally binding.



Unit 1A, EASTERN PARK | EASTERN AVENUE | LICHFIELD

WS13 7SY | ENGLAND

Tel. +44 (0) 154 3 417 241

info.uk@jallatte.com



www.jallatte.com



DECEMBER 2023 EDITION

 **Jallatte**[®]
créateur de bien-être

