

 **Jallatte**®  
créateur de bien-être



Collection

**2025**





# CREDO

For a world more respectful of  
people and the environment







## JALLATTE'S DNA

Created in 1947 by Pierre Jallatte, the inventor behind the European concept of the safety shoe which he had discovered in the United States, ever since it was founded, the Jallatte® company has been located in the Gard municipality of Saint-Hippolyte-du-Fort, sheltered in a 17th century fort inspired by Vauban, which became the historical site of Jallatte® four centuries later.

For 78 years, Jallatte® has established itself as the leader on the safety shoe market, by focusing on innovation and research into technical performance, in order to guarantee protection for people at work, to keep them healthy and to improve their well-being.

Jallatte® has been able to find a delicate balance between technology, safety, comfort and design, by offering complete ranges that meet the needs of the harshest environments while confirming the good taste of anyone who wears them.

Today, its design efforts are focused on preventing risks of DMS (Musculoskeletal Disorders) thanks to innovative materials and new technologies in multi-density soles covered by international patents.

After safety, comfort and design, Jallatte® is paving the way for anti-fatigue performance with an ergonomic approach adapted to all body shapes and working situations.

Jallatte®, creating well-being since 1947



# OUR CSR COMMITMENT



## ► WHAT IS CSR?

The European Commission defines corporate social responsibility (CSR) as a concept whereby companies integrate social and environmental concerns in their business operations and in their interaction with their stakeholders on a voluntary basis.

*"A company that adopts CSR therefore seeks to have a positive impact on society while also being economically viable".*

Source : economie.gouv.fr, July 2022

For several years, Jallatte has been committed to a world more respectful of people and the environment with its CSR initiative called J-CLEAN.

## ► WHICH CSR INITIATIVES HAS JALLATTE PUT IN PLACE?

1. The **relocalisation** of part of production to the **historical site** of Saint Hippolyte du fort **in the Gard region**
2. The creation of collections of **safety shoes certified as carbon neutral** by **Bureau Veritas** according to **international standard PAS 2060**, and **made in France**
3. Our commitment to a plan to **reduce our carbon footprint** in the long term certified according to the requirements of standard PAS 2060 (reducing our energy consumption and using green electricity)
4. The development of **local employment** and **expertise**
5. The adoption of **social benefits** and the development of a **programme for quality of life at work** to improve well-being at work and the company's performance
6. A strategy to **control costs and to manage pricing** helping take profitable market shares and guaranteeing the company's longevity
7. The priority given to **local suppliers and service providers** whenever possible
8. A plan to **reduce our waste** by setting up sorting solutions and a composter
9. The protection of the environment and maintenance of the ecosystem by setting up **bee hives around Jallatte fort**

The solid initiatives we are implementing as part of **J-CLEAN** make Jallatte a committed and responsible player in a **societal and environmental process** aimed at improving the well-being of our employees and users, while also preserving the planet!



## BLUE, WHITE AND RED



### ASSEMBLY MADE IN FRANCE

Transparent about designations of origin means we have to communicate clearly and unambiguously for our retail customers and end users.

Too many people on the market hide their manufacturing origins or remain vague, making it impossible to build trust in long-term customer relationships.

Here at Jallatte, our process is clear: we have decided to very clearly indicate any items in our catalogue with a Blue, White and Red pictogram, whose upper and sole assembly is guaranteed to be “Made in France”.

The others without a pictogram can come from our site in the Cévennes, depending on our manufacturing programmes, or from one of our factories in Tunisia which are 100% integrated and controlled by our Group structure. We should point out that all of our uppers are cut and sewn in these workshops clearly indicated as “UPPER Made In Tunisie”, meaning we are not eligible for this declaration.

All these declarations clearly stated in our communication tools and on the regulatory labels of our products are naturally to make Jallatte a transparent and responsible manufacturer that wants to develop its customer relationship according to the values of mutual respect and long-term trust.





## **TRAINERS** RANGE

J'respect / 08

J-Royal / 16

J-Energy / 20

J-Hop / 30

Triftane X / 32

J-Industry / 34

J-Nude 2 / 40

Helium / 42

J-Quartz / 46

## **OUTDOOR** RANGE

Synergy / 52

J-Escape / 58

Softane Adventure / 62

Softane Avant-Garde / 64

Softane Tradition / 66







## **CITY** RANGE

Softane Prestige / 68

## **ASSORTED** RANGE

Specials / 70

Triftane Excellence / 74

## **WORK** RANGE

J-Pro / 76

MERCHANDISING / 80

TECHNOLOGIES / 82

INDEX / 88

STANDARDS / 91



## THE CONCEPT

Being a spokesperson for a world that is **more respectful of people and the environment**, Jallatte has been committed to an extensive CSR plan for several years, called **J-Clean** which involves :

- ▶ Relocating part of the production to the **historic factory in Saint-Hippolyte-du-Fort**
- ▶ Using **local know-how**
- ▶ Adopting a **responsible purchasing policy**



To combat global warming and the natural disasters it causes, the mission set by the United Nations is clear :

- ▶ **TO REDUCE GHG EMISSIONS**  
by **45%** by 2030

According to the United Nations, becoming carbon neutral involves 3 concrete actions :

- ▶ Measuring our carbon footprint
- ▶ Reducing this carbon footprint
- ▶ Offsetting what we have not yet been able to reduce

To address the climate emergency and to help **reduce greenhouse gases**, our SME from Gard is confirming its commitment to CSR, known as J-Clean, by creating a **new generation of eco-friendly safety footwear : J'respect**.



With J'respect, our production site based in Saint-Hippolyte-du-Fort has become the first and only factory in France, and in Europe, to manufacture Carbon Neutral-certified safety footwear !





## MEASURE

Nowadays, by analysing the complete life-cycle of our products, we can estimate that a traditional safety shoe accounts for more than 15kg of CO2 per pair.



## REDUCE

To take real action and to reduce our carbon footprint, we have launched our J-Clean CSR initiative and created the J'respect collection:



### ECO-DESIGNED UPPER

► **RECYCLED MATERIALS**  
see list on page 11



► **RAW MATERIALS**  
with low CO2 emissions

### BIOSOURCED SOLE

**CARBON FOOTPRINT REDUCED BY 60%**  
Compared with conventional PU

**100% RENEWABLE MATERIALS**  
Biomass Balance Polyurethane



Developed in collaboration with BASF, this sole is designed from **100% renewable materials and without any fossil fuels**. This is the Biomass Balance approach. The next-gen PU of the J'respect sole is made from recycling and fermenting organic waste.

Our CSR commitments and the creation of the J'respect collection have enabled Jallatte to **reduce the CO2 emissions** of a pair of safety shoes **by an average of 10 to 20Kg**, i.e. a **carbon footprint reduced by 50% to 65%** depending on the model!



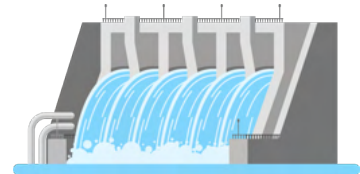


## OFFSET

「To become carbon neutral, the final pillar of our initiative is offsetting.

Jallatte is committed to this initiative of **reducing greenhouse gases** by financing, through the United Nations, a project to **generate renewable energy** in Laos.

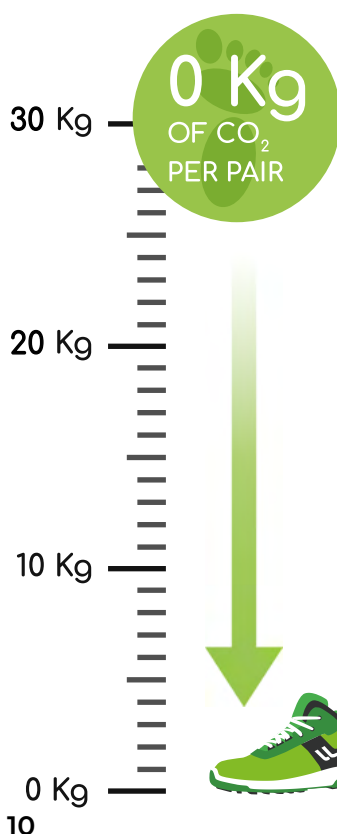
**SELF-SUFFICIENCY**  
In Energy



**NOT USING CARBON**  
For "clean" energy

By financing this project for the environment and society, Jallatte is meeting the sustainable development goals set by the United Nations.

**SUSTAINABLE  
DEVELOPMENT  
GOALS**



「Thanks to our J-Clean initiative and to our complete measuring/reducing/offsetting, the J'respect collection can ultimately claim 0 kg of CO2 per pair.



We could not do it without the **support** and **commitment** of our **partners and customers**, all of us together, working for **Zero Carbon** !





## ECO-DESIGNED UPPER



PU TEK® SPIDER technology uses new, highly abrasion-resistant yarns for greater tenacity and enhanced performance. These highly resistant, water-repellent fabrics enable us to produce ultra-lightweight, ultra-breathable S3 products. PU TEK® is made from **68% recycled polyester**.



Recycled Aseptane microfiber impregnated with resins. This makes it exceptionally waterproof and breathable, as well as easy to clean and maintain. This microfiber is ideal for use in damp environments and against fluid splashes, and is made from **40% recycled polyamide**.



Leather- and nubuck-look microfibers are made from **40% recycled materials**. The velvet-look microfiber is made from **50% recycled materials**.



Innovative, antibacterial technical lining that combines high performance breathability and abrasion resistance with a soft, comfortable feel. Its special 3-layer structure promotes thermoregulation to keep feet dry and comfortable. This lining is made from **66% recycled materials**.



Composite, non-magnetic and athermic anti-perforation insert made from **50% recycled polyester**.



Antipuncture insert in non-woven fabric, 54% lighter than a standard insert, antistatic, sewn directly onto the upper and made from **77% recycled polyester**.



Flat laces made from **100% recycled polyester**.

## INSOLE



This removable comfort insole is made of 2 materials:

- ▶ A "SOFT" layer of Dynamic **Biomass Balance** polyurethane from BASF® with shape memory, heat-sensitive and active all over the foot.
- ▶ An integrated anti-fatigue "MAXI" size insert in Elastopan Biomass Balance from BASF®, the elastomer used in anti-fatigue mats.



SOFT insole in Dynamic polyurethane from BASF® with **shape memory**, **heat-sensitive** and active all over the foot.

Directly under the soles of the feet, SOFT **improves weight distribution** by cushioning pressure points and providing a **positive energy return**.





64%\*

**JALVIVO** ESD S3S CI FO SR

UPPER : Recycled Putek Spider

CODE : JIJI447



66%\*

**JALECO** ESD S3S CI FO SR

UPPER : Recycled Putek Spider

CODE : JIJI434



66%\*

**JALFUTURE** ESD S3S CI FO SR

UPPER : Recycled microfiber, leather look

CODE : JIJI414



64%\*

**JALNATURE** ESD S3S CI FO SR

UPPER : Recycled microfiber, leather look

CODE : JIJI424



65%\*

**JALO2** ESD S1PS CI FO SR

UPPER : Recycled microfibre, velvet look

CODE : JIJI446



63%\*

**JALOX Y** ESD S1PS CI FO SR

UPPER : Recycled microfibre, velvet look

CODE : JIJI556



**AN AVERAGE OF 64%  
BIO-SOURCED OR RECYCLED  
MATERIALS\***

\*CALCULATED IN ACCORDANCE WITH EN ISO 14021:2016 WHICH IS BASED ON THE TOTAL WEIGHT OF THE SHOE







MF-R

60%\*

### JALBASALT ESD S3S CI FO SR

UPPER : Recycled microfibre, nubuck look  
CODE : JIJI534



MF-R

62%\*

### JALONYX ESD S3S CI FO SR

UPPER : Recycled microfibre, nubuck look  
CODE : JIJI544



ASEPTANE-R

62%\*

### JALQUARTZ ESD S2 FO SR

UPPER : Smooth recycled microfiber  
ANTI-PUNCTURE INSERT : N/A  
CODE : JIJI512



ASEPTANE-R

62%\*

### JALGABBRO ESD S2 FO SR

UPPER : Smooth recycled microfiber  
ANTI-PUNCTURE INSERT : N/A  
CODE : JIJI522



PU Tek SPIDER  
HYPERTEX technology

60%\*

### JALTOUNDRA ESD S3S CI FO SR

UPPER : Recycled Putek Spider  
INSOLE : Soft  
ANTIPUNCTURE INSERT : Flex-Light-R  
TOE CAP : PremAlu B  
CODE : JVJV207

Lining 3D Surf-R mesh

Toe cap Springtane B

Insole Maxi Soft Duo

Anti-puncture insert Flexthane-R

Sole PU/PU BmB BASF®

Size 35 - 48

Maxi  
SOFT  
Duo

BASF  
We create chemistry

0%  
METAL

SURF-R  
66%

flexthane R

Springtane B

Link-ESI







63%\*

**JALaubier** ESD S3S CI FO SR

UPPER : Recycled Putek Spider

CODE : JYJY464



65%\*

**JAlLiber** ESD S3S CI FO SR

UPPER : Recycled Putek Spider

CODE : JYJY474



63%\*

**JAlHydro** ESD S3S CI FO SR

UPPER : Smooth recycled microfibre

CODE : JYJY484



63%\*

**JAlRiver** ESD S3S CI FO SR

UPPER : Smooth recycled microfibre

CODE : JYJY494



Infenergy® anti-fatigue insert by BASF® made from **100% renewable materials and without any fossil fuels.**

**100% recycled laces.** Comes in 2 colours (black & green).  
Black laces for a plain look, in green for a colourful look  
or in black and green for a quirky look!



Lining	3D Surf-R mesh
Toe cap	PremAlu B
Insole	Soft
Anti-puncture insert	Flexthane-R
Sole	Infenergy® BmB PU2D/ E-TPU by BASF®
Size	35 - 48







The SYNERGY collection is fitted with a PU "scuffcap", which guarantees superior, optimum protection at the front of the foot.

This "scuffcap" allows you to work on your knees without the risk of premature wear and tear of the material on the front of the toe cap.



66%\*

**JALTREE** ESD S3S SC CI LG FO SR

UPPER : Recycled Putek Spider

CODE : JYJY434



62%\*

**JALFOREST** ESD S3S SC CI LG FO SR

UPPER : Recycled microfibre, nubuck look

CODE : JYJY454

SIZE : 38 - 48



71%\*

**JALGROVE** ESD S3S SC CI LG FO SR

UPPER : Recycled microfibre, nubuck look

CODE : JYJY444



**AN AVERAGE OF 64%  
BIO-SOURCED OR RECYCLED  
MATERIALS\***

\*CALCULATED IN ACCORDANCE WITH EN ISO 14021:2016 WHICH IS BASED ON THE TOTAL WEIGHT OF THE SHOE





# J-ROYAL

Inspired by leading sports brands, the J-ROYAL collection from Jallatte sets a **new standard for comfort and safety in the workplace**, with a touch of luxury.

Designed for demanding professionals, **this range combines sportswear design with advanced technical innovations.**

Designed to effectively **combat strenuous work**, the J-ROYAL collection guarantees absolute comfort, even **in the most demanding conditions.**





## UPPER



Putek® CAP Technology uses newly developed **high resistance abrasion** yarns, woven directly into the fabric, to obtain high-tenacity and high-performance abrasion resistant fabrics. These highly **resistant and water-repellent** fabrics allow the creation of **ultralight and ultra-breathable** S3 products.



**Water-repellent** full-grain leather.



Microfibre is a material aesthetically similar to leather, made from extremely fine filaments of polyester, polyamide (nylon) or a mixture of the two. Lightweight, robust and durable, it offers excellent **breathability, water resistance** and abrasion resistance. It is **easy to care for**.

## LINING



Lined in extremely supple **calf leather** in white, with a smooth grain finish and **premium quality** for absolute comfort and **well-being**.

## INSOLE



SELECT' insole in extremely supple **calf leather** and Dynamic polyurethane from BASF® with **shape memory**, cushions pressure points, improves weight distribution and absorbs heel shock. **Anatomically shaped** and perforated, SELECT' ensures absolute comfort and well-being.

## ANTIPUNCTURE INSERT



Extra-flexible insole made from **high tenacity** textile with a resistance of 1,100N, **non-magnetic and athermic**, which covers 100% of the surface of the foot. This anti-perforation material complies with standard EN ISO 22568-4:2021.

## INFINERGY® XL SOLE



PU2D/E-TPU Infinergy by BASF® size XL with a low density of 0.19.

Designed with an innovative **material from the world of running**, this triple-density outsole offers dynamic performance in 3 phases: **shock absorption, energy accumulation** and **dynamic restitution**. It's ideal for anyone who has to travel frequently or over long distances every day.

**JALBARON** ESD S3S SC CI FO SR

LINING : 3D Roma

INSOLE : Soft+Gel

CODE : JRJR101

SIZES : 35 - 48

**JALDUKE** ESD S3S SC CI FO SR

LINING : 3D Roma

INSOLE : Soft+Gel

CODE : JRJR201

SIZES : 35 - 48

**JALMAJESTY** ESD S3S SC CI FO SR

CODE : JRJR102

SIZES : 35 - 48

**JALLORD** ESD S3S SC CI FO SR

CODE : JRJR202

SIZES : 35 - 48



Lining	Prem pleine fleur
Toe cap	PremAlu B
Insole	Select'
Antipuncture insert	Flexthane S
Sole	J-ROYAL PU2D/E-TPU infinergy of BASF®







ASSEMBLY  
MADE IN  
FRANCE

**J-ROYAL**



### JALKING ESD S3S SC CI FO SR

UPPER : Microfibre, Nubuck look

CODE : JRJR103

SIZES : 35 - 48



### JALPRINCE ESD S3S SC CI FO SR

UPPER : Microfibre, Nubuck look

CODE : JRJR203

SIZES : 35 - 48



### JALCROWN ESD S1PS SC CI FO SR

UPPER : Velvet-look microfibre

+ DROP textile insert

CODE : JRJR207

SIZES : 35 - 48



### JALLYS ESD S1PS SC CI FO SR

UPPER : Velvet-look microfibre

+ DROP textile insert

CODE : JRJR206

SIZES : 35 - 48



Lining	Prem pleine fleur
Toe cap	PremAlu B
Insole	Select'
Antipuncture insert	Flexthane S
Sole	J-ROYAL PU2D/E-TPU infinergy of BASF®





# J-ENERGY

The safety trainers in the J-ENERGY collection allow you to **save up to 1 hour of energy per day** thanks to the INFINERGY® insert from BASF®. Already successfully used in running shoes, this innovative material has **improved athletes' performance** while **reducing the feeling of fatigue**.

And what if it were the same for safety shoe wearers?







Innovative technology used in running shoes is now available for safety shoes !

**BASF**  
We create chemistry

BASF SE

**Infinergy®**

Made with Infinergy® by BASF

For workers exposed to tiring work situations:

- Frequent journeys on foot
- Long distances travelled daily
- Prolonged standing

### J-ENERGY safety footwear

- Returns **more than 55% of the stored energy** while walking
- Save one hour of energy per day
- Reduces feeling of fatigue
- Provides **outstanding comfort** due to the cushioning of the sole
- Absorb plantar pressure zones
- Prevents the risk of developing lower limbs MSDs (musculoskeletal disorders)

According to BVA biomechanical study no. 1095 carried out in 2020 by the CTC, wearing J-ENERGY safety shoes reduces leg muscle activity by 17%. Thanks to the BASF® Infinergy insert, the pushing-off phase of the foot is more efficient, which reduces the effort required and therefore **saves one hour of energy per day**.

Our « Energy » is valuable, let's protect it !



**JALFLASH** ESD S3S CI FO SR

UPPER : Smooth nubuck leather

LINING : 3D Surf mesh

CODE : JYJY189      SIZE : 35 - 48

**JALSTAR** ESD S3S CI FO SR

UPPER : Smooth nubuck leather

LINING : 3D Surf mesh

CODE : JYJY289      SIZE : 35 - 48

**JALBOMBER** ESD S3S CI FO SR

UPPER : PUTEK STAR

LINING : 3D Surf mesh

CODE : JYJY498      SIZE : 35 - 48

**JALWAVE** ESD S3S CI FO SR

UPPER : Smooth nubuck leather

LINING : 3D Surf mesh

CODE : JYJY499      SIZE : 35 - 48

**JALPURE** ESD S3 CI SRC ●

UPPER : PUTEK PLUS abrasion-resistant and breathable

LINING : 3D Roma mesh

CODE : JYJY250      SIZE : 35 - 48

**JALPERFECT** ESD S3S CI FO SR

UPPER : Breathable and waterproof microfiber

LINING : 3D Roma mesh

CODE : JYJY251      SIZE : 35 - 48

Toe cap PremAlu B

Insole Soft + Gel

Anti-puncture insert Flexthane

Sole Triple density with high energy return PU2D/E-TPU Infinergy® from BASF®





## AN ASSERTIVE NEW STYLE :

**SPORT** & *chic*


### JALPACINO S3S CI FO SR

Derby-style straight-toe sneaker

CODE : JYJY500

SIZE : 38 - 48



### JALDENIRO S1PS FO SR

Golf-style Richelieu town sneaker

CODE : JYJY501

SIZE : 38 - 48


**Infinergy®**

Made with Infinergy® by BASF

**>55% energy restitution !\***

\*Bounce rate in accordance with DIN 53 512

Upper	Pure full-grain leather
Toe cap	PremAlu B
Insole	Soft+Gel
Anti-puncture insert	Flexthane
Sole	Triple density with high energy return PU2D/E-TPU Infinergy® from BASF®


**SOFT+GEL**

**LINK-ESD**
**PremAlu B**


Products certified according to standard EN ISO 20345:2022

**JALCLIMATE S7S CI FO SR**

UPPER : PUTEK® PLUS highly resistant to abrasion, water resistant and breathable

LINING : GORE-TEX® Membrane

CODE : JYJY137

SIZE : 38 - 48

**JALDYNAM ESD S3S CI FO SR**

LINING : 3D Surf mesh

CODE : JYJY103

SIZE : 35 - 48

**JALSPRING ESD S3S CI FO SR**

LINING : 3D Surf mesh

CODE : JYJY203

SIZE : 35 - 48

**JALPULSE ESD S3S CI FO SR**

LINING : 3D Roma mesh

CODE : JYJY104

SIZE : 38 - 48

**JALTONIC ESD S3S CI FO SR**

LINING : 3D Roma mesh

CODE : JYJY204

SIZE : 38 - 48

Upper Smooth nubuck leather

Toe cap PremAlu B

Insole Soft + Gel

Anti-puncture insert Flexthane

Sole Triple density with high energy return PU2D/E-TPU Infinergy® from BASF®







### JALTURBO ESD S3S CI FO SR

UPPER : Full grain water resistant leather  
CODE : JYJY132      SIZE : 38 - 48



### JALGEAR ESD S3S CI FO SR

UPPER : Full grain water resistant leather  
CODE : JYJY232      SIZE : 38 - 48



### JALSOLID ESD S3S CI FO SR

UPPER : PUTEK® PLUS highly resistant to abrasion, water resistant and breathable  
CODE : JYJY134      SIZE : 38 - 48



### JALSKIN ESD S3S CI FO SR

UPPER : PUTEK® PLUS highly resistant to abrasion, water resistant and breathable  
CODE : JYJY234      SIZE : 38 - 48

Lining	3D Surf mesh
Toe cap	PremAlu B
Insole	Soft + Gel
Anti-puncture insert	Flexthane
Sole	Triple density with high energy return PU2D/E-TPU Infinergy® from BASF®



**JALPUNCH** ESD S1PS CI FO SR

UPPER : Smooth suede leather with breathable Nylon fabric inserts

LINING : 3D Surf mesh

CODE : JYJY101

SIZE : 35 - 48

**JALPEPS** ESD S1PS CI FO SR

UPPER : Smooth suede leather with breathable Nylon fabric inserts

LINING : 3D Surf mesh

CODE : JYJY201

SIZE : 35 - 48

**JALACTIVE** ESD S1PS CI FO SR

UPPER : Perforated suede leather, anti-abrasion textile

LINING : 3D Roma mesh

CODE : JYJY102

SIZE : 38 - 48

**JALRUN** ESD S1PS CI FO SR

UPPER : Perforated suede leather, anti-abrasion textile

LINING : 3D Roma mesh

CODE : JYJY202

SIZE : 38 - 48

Toe cap	PremAlu B
Insole	Soft + Gel
Anti-puncture insert	Flexthane
Sole	Triple density with high energy return PU2D/E-TPU Infinergy® from BASF®





**JALHYGIE** ESD S3S FO SR

CODE : JYJY216

SIZE : 35 - 46

**JALCARBO** ESD S3S FO SR

CODE : JYJY217

SIZE : 35 - 46

Upper Microfiber Aseptane

Lining 3D Surf mesh

Toe cap Springtane B

Insole Soft + Gel

Anti-puncture insert Flexthane

Sole Triple density with high energy return PU2D/E-TPU Infinergy® from BASF®



ASEPTANE

Springtane B

SOFT+GEL



Link-ESD



## LADIES' COLLECTION



Shoes adapted  
to women's feet



**DOUBLE LACE**

*For two different looks: sober or fun !*



### MIKY ESD S3 CI SRC

UPPER : Water resistant leather, Nubuck  
Finishing

CODE : JYJY109

SIZE : 35 - 42



### NOA ESD S3 CI SRC

UPPER : Water resistant leather, Nubuck  
Finishing

CODE : JYJY209

SIZE : 35 - 42



### LAIA ESD S1P CI SRC

UPPER : Smooth suede leather with breathable  
Nylon fabric inserts

CODE : JYJY212

Size : 35 - 42



### INES ESD S1P SRC

UPPER : Textured technical fabric

CODE : JYJY211

SIZE : 35 - 42

Lining	3D Surf mesh
Toe cap	PremAlu B
Insole	Soft + Gel
Anti-puncture insert	Flexthane
Sole	Triple density with high energy return PU2D/E-TPU Infinergy® from BASF®









# J-HOP!



**BASF**  
We create chemistry

A sole designed with **BASF® PU Extra Rebound 41.5%** guarantees a **constant energy return of over 40%** across its entire surface, both in the stance phase and when pushing off with the foot.

Its particularly soft and supple composition provides **lightness, well-being** and total **comfort**, reducing the sensation of fatigue during walking and sustained activity.





**JALHYBRIS** ESD S3S CI FO SR

CODE : JHJH408

SIZE : 35 - 48



**JALMETIS** ESD S3S CI FO SR

CODE : JHJH308

SIZE : 35 - 48



**JALURANIA** ESD S3 CI SRC ●

UPPER : Water resistant leather, Nubuck  
Finishing

CODE : JHJH407

SIZE : 35 - 48



**JALEVA** ESD S3 CI SRC ●

UPPER : Water resistant leather, Nubuck  
Finishing

CODE : JHJH307

SIZE : 35 - 48



**JALJUNO** ESD S3 CI SRC ●

UPPER : Full grain water resistant leather

CODE : JHJH306

SIZE : 35 - 48



**JALTHIA** ESD S1P SRC ●

CODE : JHJH402

SIZE : 35 - 48

Lining 3D Surf mesh  
Toe cap PremAlu B  
Insole Soft + Gel  
Anti-puncture insert Flexthane  
Sole PU/PU Extra Rebound from BASF®



**SOFT+GEL** Link-ESD





# TRIFTANEX

The safety sneakers of the TRIFTANE X collection are equipped with a Vibram® sole that guarantees more durability and better resistance to slipping and on hot surfaces to ensure the safety and comfort of workers in the oil & gas sector, but also in industry, maintenance and mechanics.







## JALPOLYXO S3 CI HRO SRC ●

UPPER : Full grain water resistant leather

CODE : JXJX906

SIZE : 35 - 48

## JALINO S3 CI HRO SRC ●

UPPER : Full grain water resistant leatherather

CODE : JXJX006

SIZE : 35 - 48



<b>Lining</b>	3D Surf mesh
<b>Toe cap</b>	PremAlu B
<b>Insole</b>	Soft + Gel
<b>Midsole insert</b>	Flexthane
<b>Sole</b>	Triflone X Vibram®







# J-INDUSTRY<sup>4.0</sup>

EXTENDED STANDING **HEALTH** SOLUTION





All-round versatility that reduces tiredness and fatigue in all situations.

MAXI-Soft Duo™ is an entirely innovative insole concept, designed especially for people who have to **stand for many hours a day**.

It combines an insole with a comfort layer, directly in contact with the sole of the foot



MAXI-Soft Duo™ balances posture and provides an **undeniable feeling of comfort**, due to two associated technologies, which the user perceives directly at their workstation.

Its elastic deformation properties permits the insole to provide both **progressive and prolonged cushioning** throughout the step or while walking and a return of energy during the pressure stage on the foot for a **guaranteed anti-fatigue effect**.



**BASF**  
We create chemistry

The **removable** comfort insole is made of 2 materials :

- +** A 'SOFT' BASF® dynamic polyurethane layer including memory foam, which is heat-sensitive and active over the entire surface of the foot.  
Under the soles of the feet, SOFT **improves weight distribution** by reducing pressure points and the feeling of discomfort.
- +** An integrated 'MAXI'-size anti-fatigue insert made of BASF® Elastopan, an elastomer that is used in anti-fatigue mats. Positioned beneath the base layer, this MAXI insert **cushions and alleviates stress on the body**, which is forced to stand upright for many hours a day, both while in motion and while walking, thus **reducing the risk of MSDs** (musculoskeletal disorders) in the lower limbs.



### JALPYTHON ESD S3S CI FO SR

CODE : JIJ1244

SIZE : 35 - 48



BOA® Fit System is a rapid, easy and accurate lacing system with no need for laces. **Eliminates the risk of fall** and untying laces

**Safety, comfort, speed  
= preserved health !**



### JALTECHNO ESD S3S CI FO SR

CODE : JIJ1124

SIZE : 35 - 48



### JALNANO ESD S3S CI FO SR

CODE : JIJ1224

SIZE : 35 - 48



### JALPROCESS ESD S3S CI HI FO SR

UPPER : Full grain water resistant leather

CODE : JIJ1114

SIZE : 35 - 48



### JALCYBER ESD S3S CI HI FO SR

UPPER : Full grain water resistant leather

CODE : JIJ1214

SIZE : 35 - 48

Upper PUTEK® PLUS water resistant

Lining 3D Surf mesh

Toe cap Springtane B

Insole Maxi Soft Duo

Anti-puncture insert Flexthane

Sole PU/PU from BASF®







0%  
METAL

**JALELEC** ESD S1PS CI HI FO SR

CODE : JIJ1156

SIZE : 35 - 48



0%  
METAL

**JALMECA** ESD S1PS CI HI FO SR

CODE : JIJ1256

SIZE : 35 - 48



0%  
METAL

**JALCLOUD** ESD S1PS CI FO SR

CODE : JIJ1134

SIZE : 35 - 48



0%  
METAL

**JALDATA** ESD S1PS CI FO SR

CODE : JIJ1234

SIZE : 35 - 48



0%  
METAL

**JALKANBAN** ESD S1PS CI FO SR

CODE : JIJ1166

SIZE : 35 - 48



0%  
METAL

**JALLEAN** ESD S1PS CI FO SR

CODE : JIJ1266

SIZE : 35 - 48

Upper Rio suede leather

Lining 3D Surf mesh

Toe cap Springtane B

Insole Maxi Soft Duo

Anti-puncture insert Flexthane

Sole PU/PU from BASF®



## ASEPTANE



Aseptane is a resin-soaked microfibre that has many properties:

- + Exceptional waterproofing and breathability
- + Easy to clean and look after
- + Ideal for use in wet and splash-prone environments



### JALCALCIUM ESD S2 FO SR

CODE : JIJ1282

SIZE : 35 - 48



### JALGRAPHITE ESD S2 FO SR

CODE : JIJ1272

SIZE : 35 - 48

Upper	Aseptane
Lining	3D Surf mesh
Toe cap	Springtane B
Insole	Maxi Soft Duo
Sole	PU/PU from BASF®

ASEPTANE

Springtane B

Maxi  
SOFT  
Duo

BASF  
We create chemistry

0%  
METAL

LiNK-ESD





## QuickLio™



QuickLio™ 2 en 1" technical lace loop keeps laces in place for **quick lacing** and **untieability**.



**JALBUMPER** ESD S3S SC CI LG FO SR

SOLE : PU/PU from BASF®

CODE : JIJI174

SIZE : 35 - 48



**JALTRAILER** ESD S3S SC CI LG FO SR

SOLE : PU/PU from BASF®

CODE : JIJI184

SIZE : 35 - 48



**JALROADSTER**

S3S SC CI HI HRO LG FO SR

SOLE : PU/VIBRAM®

CODE : JIJI194

SIZE : 35 - 48



**JALTRUCK** ESD S3 CI SRC ●

SOLE : PU/PU from BASF®

CODE : JIJI284

SIZE : 35 - 48

Upper Full-grain leather with Pull-up finish

Lining 3D Surf mesh

Toe cap Springtane B

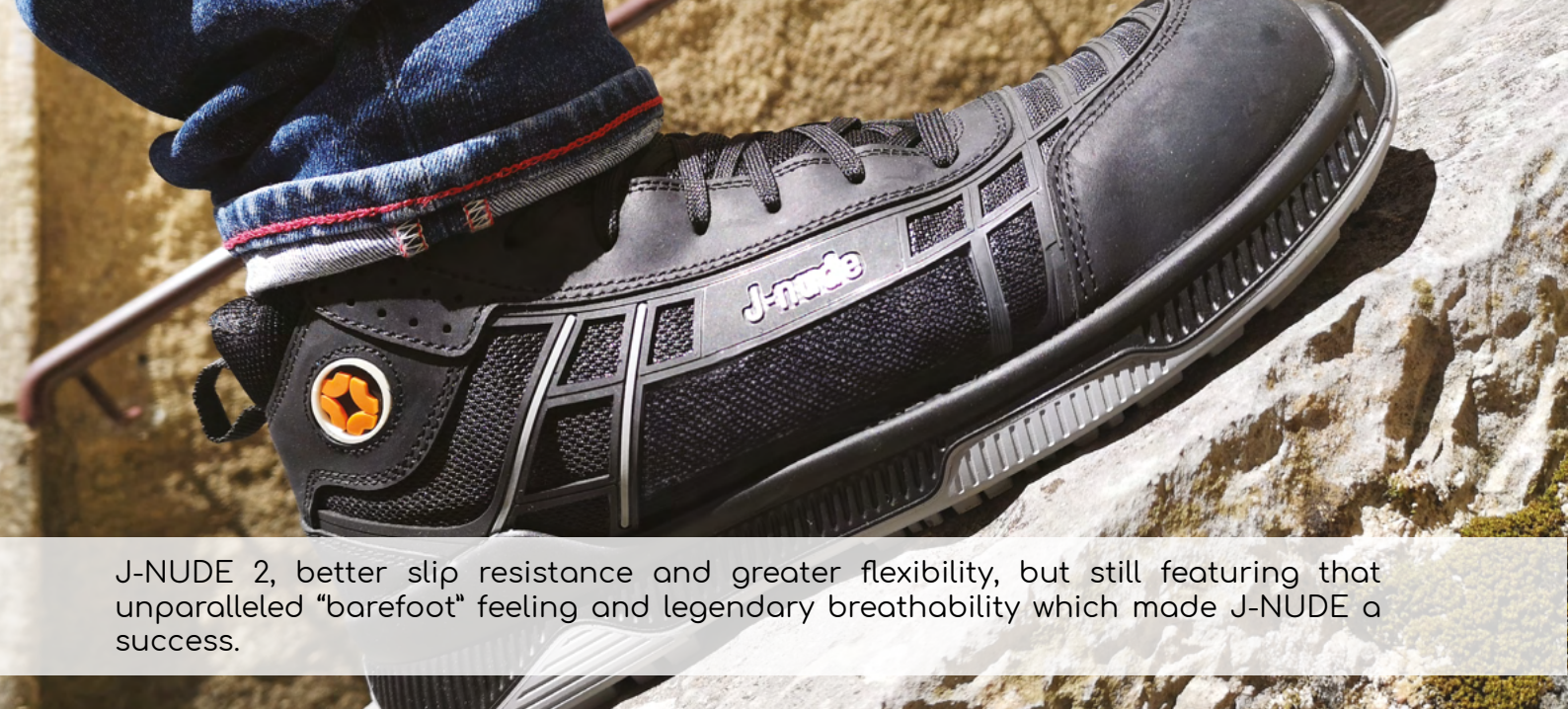
Insole Maxi Soft Duo

Anti-puncture insert Flexthane



Link-ESD





J-NUDE 2, better slip resistance and greater flexibility, but still featuring that unparalleled “barefoot” feeling and legendary breathability which made J-NUDE a success.



#UPPER  
FRAME

**JALREI** ESD S3S FO SR

CODE : 00JNI29

SIZE : 35 - 47



#UPPER  
FRAME

**JALTAI** ESD S3S FO SR

CODE : 00JNI03

SIZE : 35 - 47



#UPPER  
FRAME

**JALKOHAI** ESD S3 SRC ●

CODE : 00JNI28

SIZE : 35 - 47



#UPPER  
FRAME

**JALDOJO** ESD S3 SRC ●

CODE : 00JNI01

SIZE : 35 - 47

**Upper** Water-repellent full-grain eather with a pull-up finish and a TPU grid reinforcement

**Lining** 3D Surf mesh

**Toe cap** Springtane B

**Insole** Soft + Gel

**Anti-puncture insert** Flexthane

**Sole** J-NUDE 2 PU/PU from BASF®



**SOFT+GEL**

**0%  
METAL**



**LiNK-ESD**

**BASF**  
We create chemistry



**JALJAB** ESD S3S FO SR

UPPER : Water-repellent full-grain leather and fabric

CODE : 00JN119

SIZE : 35 - 47

**JALCROSS** ESD S3S FO SR

UPPER : Water-repellent full-grain leather and fabric

CODE : 00JN120

SIZE : 35 - 47

**JALATHLON** ESD S3 SRC ●

UPPER : Water-repellent full-grain leather and fabric

CODE : 00JN107

SIZE : 35 - 47

Lining	3D Surf mesh
Toe cap	Springtane B
Insole	Soft + Gel
Anti-puncture insert	Flexthane
Sole	J-NUDE 2 PU/PU from BASF®



**SOFT+GEL**

**0% METAL**



**Link-ESD**







**Lightness** is an essential component of **comfort**. Thanks to new, ultra-light materials that maintain excellent technical performance, the **HELIUM** collection succeeds in guaranteeing the best "durability/weight" ratio, by reconciling workstation **resistance** with an **unrivalled feeling of lightness**.

Models in the **HELIUM** collection are **ideal for use in less demanding environments**, in transport, logistics, light industry, construction, retail and services.





## UPPER



PUTEK® STAR technology uses new, highly abrasion-resistant yarns, for greater tenacity and enhanced performance, above and beyond normative requirements. These highly resistant, water-repellent fabrics enable us to produce ultra-lightweight, ultra-breathable S3 products.



Light microfiber with waterproofing and breathability performances comparable to standard leathers.



Highly abrasion-resistant, ultra-breathable CANVAS fabric for extended wear and optimum foot comfort.

## INSOLE



SOFT Light insole made of ultra-light expanded polymer, placed directly under the soles of the feet, SOFT Light improves weight distribution by cushioning pressure points and providing a positive energy return.

## ANTI-PUNCTURE INSERT



Composite anti-puncture insert made of non-woven fabric 54% lighter than a standard anti-puncture insert, compliant with standard 22568-4:2021, antistatic, sewn directly onto the upper and covering 100% of the foot for all-round protection. This insert is made from 77% recycled polyester.



**JALPATRIOT** ESD S3S CI FO SR ●

CODE : JVJV103 SIZE : 35 - 48



**JALNATION** ESD S3S CI FO SR ●

CODE : JVJV203 SIZE : 35 - 48



**JALSPACE** ESD S3S CI FO SR

CODE : JVJV101 SIZE : 35 - 48



**JALAERO** ESD S3S CI FO SR

CODE : JVJV201 SIZE : 35 - 48



**JALSTRATO** ESD S3S CI FO SR

CODE : JVJV206 SIZE : 35 - 48



p14

**CARBON NEUTRAL**



**JALTOUNDRA** ESD S3S CI FO SR

UPPER : Recycled Putek Spider

CODE : JVJV207 SIZE : 35 - 48

Upper	Putek® STAR Light
Lining	3D Surf mesh
Toe cap	PremAlu B
Insole	Soft Light
Anti-puncture insert	Flex-Light-R
Sole	PU Light from BASF®







### JALCONDOR ESD S3S CI FO SR

UPPER : Breathable Light microfiber  
CODE : JVJV109      SIZE : 35 - 48



### JALMAZOR ESD S3S CI FO SR

UPPER : Breathable Light microfiber  
CODE : JVJV209      SIZE : 35 - 48



### JALTAIL ESD S3S CI FO SR

UPPER : Breathable Light microfiber  
CODE : JVJV102      SIZE : 35 - 48



### JALWING ESD S3S CI FO SR

UPPER : Breathable Light microfiber  
CODE : JVJV202      SIZE : 35 - 48



### JALLADY ESD S3S CI FO SR

UPPER : Breathable Light microfiber  
CODE : JVJV204      SIZE : 35 - 42



### JALPLUME ESD S1P CI SRC

UPPER : Breathable Light fabric  
CODE : JVJV205      SIZE : 35 - 48

Lining	3D Surf mesh
Toe cap	PremAlu B
Insole	Soft Light
Anti-puncture insert	Flex-Light-R
Sole	PU Light from BASF®





# J-QUARTZ



To combat falls on level ground and falls from height, Jallatte has designed a new collection of shoes that ensures maximum safety for workers faced with these types of risks.

The sole of J-Quartz safety shoes has been designed with a double heel that “locks” the foot in place like a wedge to prevent slipping, providing better grip on ladder rungs, stepladders, scaffolding, etc.



**UPPER**

PU TEK® PLUS technology uses yarns with very high abrasion resistance for greater toughness and enhanced performance, exceeding standard requirements. These highly resistant, water-repellent fabrics enable the creation of ultra-lightweight, ultra-breathable S3 products.



Light microfiber with waterproofing and breathability comparable to standard leathers.



CANVAS fabric that is highly resistant to abrasion and ultra-breathable for extended durability and optimal foot comfort.

**INSOLE**

Thermoregulating and ergonomic insole. Its structure with air evacuation channels and perforations improves climate comfort inside the shoe, and its dual-material design provides optimal comfort when walking.

**ANTI-PUNCTURE INSERT**

Type S anti-perforation insert, resistant to perforation with a 3mm diameter tip (Small) and compliant with standard 22568-4:2021, antistatic, 100% composite, sewn directly onto the upper and covering 100% of the foot for complete protection.

**TOECAP**

Type B 200 J toe cap: Ultra-resistant to impact and compression, the dual-material Xetane B composite toe cap increases safety and reduces the risk of toe injuries thanks to its safety height of at least 25 mm (compared to 21 mm with the old toe cap). This increase makes it easier to remove your foot in the event of an impact or crushing.

**SOLE****JAL'GRIP SYSTEM**

LG standard double hook for secure attachment to ladder rungs and maximum safety when working at height.



### JALCOPPER ESD S3S CI LG FO SR

UPPER : Water-repellent full-grain leather

CODE : JQJQ101



### JALAMBER ESD S3S CI LG FO SR

UPPER : Water-repellent full-grain leather

CODE : JQJQ201



### JALOPAL ESD S3S CI LG FO SR

UPPER : Breathable Light Microfiber

CODE : JQJQ104



### JALPEARL ESD S3S CI LG FO SR

UPPER : Breathable Light Microfiber

CODE : JQJQ204



### JALCORAIL ESD S1PS CI LG FO SR

UPPER : Suede leather + Breathable Light fabric

CODE : JQJQ205



### JALLINEN ESD S1PS CI LG FO SR

UPPER : Suede leather + Breathable Light fabric

CODE : JQJQ208

Lining	3D Surf mesh
Toe cap	Xetane B
Insole	Air&Shock
Anti-puncture insert	Flexthane S
Sole	PU + JALGRIP SYSTEM
Sizes	35-48

Air & Shock



JAL'GRIP SYSTEM







## JALCITRINE ESD S3S CI LG FO SR

UPPER : Putek® Plus breathable and abrasion resistant

CODE : JQJQ103



## JALTOPAZ ESD S3S CI LG FO SR

UPPER : Putek® Plus breathable and abrasion resistant

CODE : JQJQ203



## JALTITANIUM ESD S3S CI LG FO SR

UPPER : Putek® Plus breathable and abrasion resistant

CODE : JQJQ102



## JALSILVER ESD S3S CI LG FO SR

UPPER : Putek® Plus breathable and abrasion resistant

CODE : JQJQ202



## JALGEM ESD S1PS CI LG FO SR

UPPER : Suede leather + Breathable Light fabric

CODE : JQJQ207



## JALSILK ESD S1PS CI LG FO SR

UPPER : Suede leather + Breathable Light fabric

CODE : JQJQ206

Lining	3D Surf mesh
Toe cap	Xetane B
Insole	Air&Shock
Anti-puncture insert	Flexthane S
Sole	PU + JALGRIP SYSTEM
Sizes	35-48

Air&Shock



JAL'GRIP SYSTEM

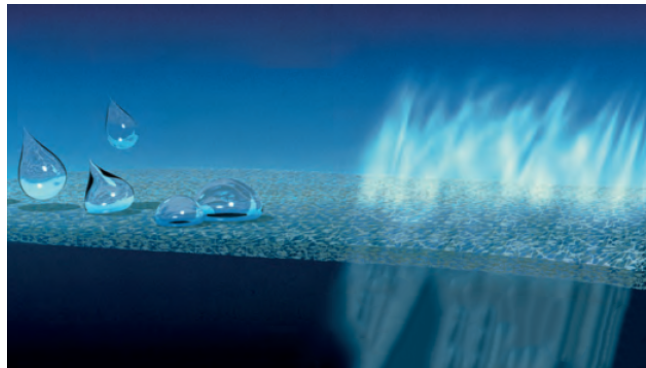


## PROTECTION & COMFORT

The GORE-TEX® membrane – the hidden secret at the core of GORE-TEX® Footwear offers high climate comfort in all working weather conditions.

Water stays out while sweat escapes.

GORE-TEX® footwear keep your feet dry and comfortable.



To meet the specific requirements of climate, professional environment, activity level and end use, Gore has special laminates.

Jallatte has chosen Comfort & Performance laminate :

- Durable waterproof
- Breathable
- Moderate thermal insulation for a wide range of temperatures.

Ideal for changing weather and wide range of activities.

## PROVEN QUALITY UNDER UNCOMPROMISING TESTING CONDITIONS



### WATERPROOFNESS

GORE-TEX® Footwear has to withstand up to 300,000 flex movements (80 hours) in anklehigh water – without allowing one single drop of water to penetrate inside the boot. EN ISO standard 20344 requires only 4800 flexes (80 minutes) and 3 cm<sup>2</sup> water entry is allowed.



### BREATHABILITY

The materials used in GORE-TEX® Footwear achieve a breathability value up to six times higher than the values specified in EN ISO standard 20345/47.



### DURABILITY

Inner lining and upper materials of GORE-TEX® Footwear have to withstand up to four times more abrasion movement than specified in by the EN ISO standard.





JALGAND p53

**SYNERGY**



JALROCHE p58

**J-ESCAPE**



JALCLIMATE p24

**J-ENERGY**



JALACER p58

**J-ESCAPE**



JALPOLE p64

**Softane**  
— Avant-Garde



JALTERRE p58

**J-ESCAPE**



JALTEX p63

**Softane**  
— Adventure



JALSIBERIEN p58

**J-ESCAPE**



GORE-TEX® footwear far exceeds the requirements of EN ISO 20345 for  
waterproofness, breathability and durability.



## The first OUTDOOR energy-saving collection

Codeveloped collection by, and for major players in, the construction, rail transport and energy sectors.

The « **SYNERGY** » line is a perfect union between a profile cleat system for outside use and a sole capable of releasing energy.



**SYNERGY** styles feature a sole with BASF's Infinergy® technology that **returns over 55% of the energy stored** while walking. All this for exceptional **cushioning** and a guaranteed **antifatigue** effect.







The SYNERGY collection is evolving thanks to the PU "scuffcap", which guarantees superior, optimal protection at the front of the foot.

This "scuffcap" allows you to work on your knees without the risk of premature wear and tear of the material on the front of the toe cap.



### JALGAND S7S SC CI LG FO SR

UPPER : Full grain water resistant leather finition PULL-UP

LINING : Membrane GORE-TEX®

CODE : JYJY231

SIZE : 38 - 47

### JALNORA ESD S3S SC CI LG FO SR

UPPER : PUTEK® PLUS highly resistant to abrasion, water resistant and breathable

LINING : 3D Surf mesh

CODE : JYJY252

SIZE : 38 - 47



Toe cap PremAlu B

Insole Soft

Anti-puncture insert Flexthane

Sole Triple density with high energy return PU2D/E-TPU Infinergy® from BASF®



**JALANGO** ESD S3S SC CI LG FO SR

CODE : JYJY497

SIZE : 38 - 48

**BOA® Fit System** lets you quickly put on and take off the safety shoes. Traditional laces are replaced with a stainless steel wire connected to a mechanical knob that lets you fasten, lock and unfasten the wire.



This lace-free fastening system **prevents the risk of falling** and **eliminates compression points**

**JALALTA** ESD S3S SC CI LG FO SR

CODE : JYJY495

SIZE : 35 - 48

**JALTANO** ESD S3S SC CI LG FO SR

CODE : JYJY496

SIZE : 35 - 48



QuickLio™ 2 en 1" technical lace loop keeps laces in place for **quick lacing** and **untieability**.

Upper	Full-grain leather with Pull-up finish
Lining	3D Surf mesh
Toe cap	PremAlu B
Insole	Soft
Anti-puncture insert	Flexthane
Sole	Triple density with high energy return PU2D/E-TPU Infinergy® from BASF®

**SOFT****PremAlu B****Infinergy®**

Made with Infinergy® by BASF







**JALBARAD** S3 SC CI HI LG FO SR

CODE : JYJY222

SIZE : 38 - 47



**JALTARAK** S3 AN SC CI HI LG FO SR

CODE : JYJY226

SIZE : 35 - 48



**JALMUDO** S3 SC CI LG FO SR

CODE : JYJY223

SIZE : 38 - 47



**JALFARO** S3 SC CI LG FO SR

LINING : Isotermal

CODE : JYJY224

SIZE : 38 - 47

Upper Full-grain leather with Pull-up finish

Lining 3D Surf mesh

Toe cap PremAlu B

Insole Soft

Anti-puncture insert Stainless steel

Sole Triple density with high energy return  
PU2D/E-TPU Infinergy® from BASF®



## MORE SECURITY, FOR MORE SERENITY, AT ALL TIMES

Vibram® is the world leader in the technological development and manufacture of high-performance rubber soles, for the outdoor, work safety, lifestyle, orthopaedic and repair markets. For more than 80 years, the unmistakable yellow octagon has been the symbol of a company synonymous with **quality, performance, safety, innovation and design.**

From the moment we created the first rubber sole for mountaineering, Vibram® has become a benchmark in the footwear market. Vibram® soles – derived from a desire to **boost safety and protection** – are known all over the world, and are the result of a constant commitment to research and development.



This stroke of genius led to the début of the first soles branded Vibram® – a combination of the inventor's first name and surname – and the famous Carrarmato sole that revolutionised both mountaineering and the world of footwear, allowing for unprecedented performance in terms of **abrasion resistance, traction and grip.**

The Vibram® story began in 1936, when Vitale Bramani (an Academic of the Italian Alpine Club), on his return from a mountaineering ascent that ended in tragedy (1935), came up with the idea of making footwear soles using the same technique employed for making vehicle tyres.

## VIBRAM® TESTS

Each and every Vibram sole must pass 3 levels of testing before it reaches the market. This series of tests ensures the **product quality meets and use requirements.**



### LAB TESTS

The physical-mechanical characteristics of the soles are tested by machines. The objective is to measure the resistance of the sole sole to slips, abrasion, elasticity, hardness and density.



### IN VIVO TESTS

- Indoor testing on shoes equipped with Vibram® flat soles.
- Tests performed by technicians according to a specific protocol.

The objective is to measure the performance of the gum to rubber.



### FIELD TEST

- Indoor Testing on shoes with flat sole design.
  - Run on shoes by humans with scientific protocols ("in vivo")
- Test samples : flat design soles to focus on compound performance Output : trustable compounds comparison.

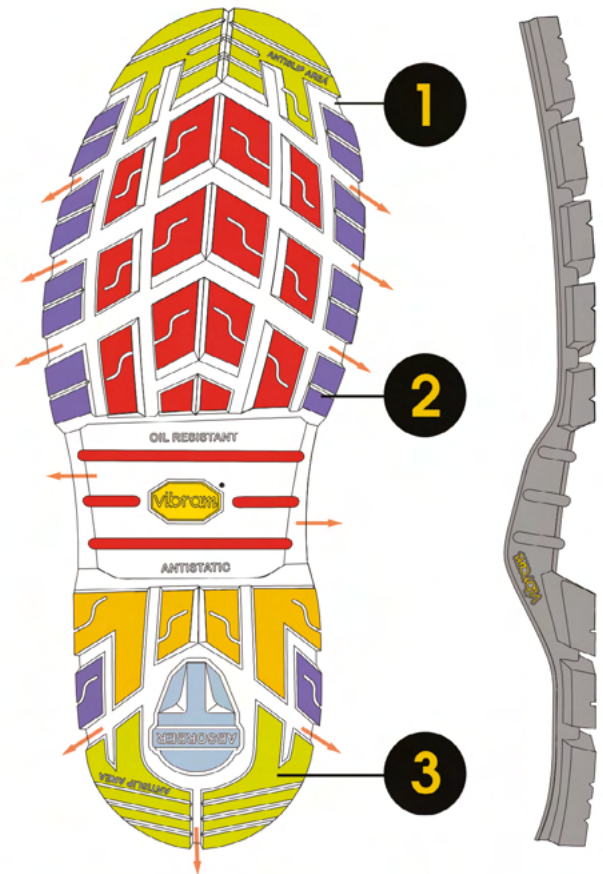


The secret of Vibram® performance lies in the perfect combination of the **hyperfunctional DESIGN** of the soles and the use of **exclusive RUBBER varieties**.



## TRUCKER

1194



■ GRIP ■ TRACTION ■ BRAKING ■ STABILITY ■ CUSHIONING ■ SELF-CLEANING



- Engineered for use in a wide range of work and safety environments
- Provides a high level of grip and durability
- Excellent heat and tear resistance

BEST FOR



### DESIGN & TECHNOLOGY

- 1 Large contact area for grip on industrial contaminated floors
- 2 Reinforced cleats for stability and durability
- 3 Oil draining channels to enhance grip and safety



**Waterproof and maximum grip**



### JALACER

S7S SC CI HI HRO LG FO SR  
CODE : 00JJE23      SIZE : 38 - 47



0%  
METAL

### JALROCHE

S7S SC CI HI HRO LG FO SR  
CODE : 00JJV01      SIZE : 38 - 47



0%  
METAL

3M  
**Thinsulate**  
INSULATION

### JALSIBERIEN

S7S SC CI HI HRO LG FO SR  
CODE : 00JJV33      SIZE : 38 - 47



### JALTERRE

S7S CI HI HRO LG FO SR  
CODE : 00JJV31      SIZE : 38 - 47

Upper	Pure full-grain leather
Lining	GORE-TEX® Membrane
Toe cap	Springtane B
Insole	Soft
Anti-puncture insert	Flexthane
Sole	Vibram®



PULL-UP



PLEINE FLEUR







## JALHICKORY

S3 SC CI HI HRO LG FO SR

CODE : 00JJE15

SIZE : 38 - 47



ANKLE  
PROTECTOR

## JALIROK

S3 AN SC CI HI HRO LG FO SR

CODE : 00JJE17

SIZE : 38 - 47



## JALSALIX

S3 SC CI HI HRO LG FO SR

CODE : 00JJE16

SIZE : 38 - 47



## JALBOX

S3 SC CI HI HRO LG FO SR

LINING : Isotermal

CODE : 00JJE19

SIZE : 38 - 47

Upper	Full-grain leather with Pull-up finish
Lining	3D Surf mesh
Toe cap	Springtane B
Insole	Soft
Anti-puncture insert	Stainless steel
Sole	Vibram®



SOFT

Springtane B



**JALARCHER**

S3S SC CI HI HRO LG FO SR

UPPER : Full grain water resistant leather

LINING : 3D Imola mesh

ANTI-PUNCTURE INSERT : Flexthane

CODE : 00JJV28      SIZE : 38 - 47

**JALDARK**

S3S SC CI HI HRO LG FO SR

UPPER : Full grain water resistant leather

LINING : 3D Surf mesh

ANTI-PUNCTURE INSERT : Flexthane

CODE : 00JJE64      SIZE : 38 - 47

**JALORKA** S3 SC AN CI HI HRO LG FO SR

UPPER : Cuir pleine fleur hydrofuge

LINING : Maille 3D Surf

ANTIPUNCTURE : Acier inoxydable

CODE : 00JJE58      SIZE : 38 - 47



Toe cap Springtane B  
Insole Soft  
Sole Vibram®

Springtane B

SOFT

vibram









0%  
METAL

## JALTEX S7S SC CI LG FO SR

UPPER : Full-grain leather with Pull-up finish

LINING : Membrane GORE-TEX®

CODE : 00JJV53

SIZE : 38 - 47



## JALWENGÉ S3S SC CI LG FO SR

UPPER : Full grain water resistant leather

CODE : 00JJE70

SIZE : 38 - 47



## JALEBENE S3S SC CI LG FO SR

UPPER : Full grain water resistant leather

CODE : 00JJE65

SIZE : 38 - 47



## JALWILLOW ESD S3S CI LG FO SR

UPPER : Water-repellent full-grain leather with pull-up finish

CODE : 00JJE63

SIZE : 38 - 47



## Excellent water impermeability

no water penetration even  
after 7 hours of testing

Lining	3D Surf mesh
Toe cap	Springtane B
Insole	Soft
Anti-puncture insert	Flexthane
Sole	Softane Bi-density from BASF®







## JALFIR S3 AN SC CI LG FO SR

CODE : 00JJE41

SIZE : 35 - 48



## JALBEECH S3 SC CI LG FO SR

CODE : 00JJE44

SIZE : 38 - 47



## JALCYPRESS S3 SC CI LG FO SR

LINING : Isotermal

CODE : 00JJE45

SIZE : 38 - 47



## JALSEQUOIA S3 SC CI LG FO SR

CODE : 00JJE42

SIZE : 38 - 47



## JALOAK S3 SC CI LG FO SR

CODE : 00JJE40

SIZE : 38 - 47

Upper	Full-grain leather with
Lining	Pull-up finish
Toe cap	3D Surf mesh
Insole	Springtane B
Anti-puncture insert	Soft
Sole	Stainless steel
Softane Bi-density from BASF®	



Springtane B





**JALPOLE S7 SC CI LG FO SR**

LINING : GORE-TEX® Membrane

ANTI-PUNCTURE INSERT : Stainless steel

CODE : 00JJS11

SIZE : 37 - 48



0%  
METAL

**JALHAKA S3S SC LG FO SR**

CODE : 00J0650

SIZE : 35 - 48



0%  
METAL

**JALFRIGG S3S SC CI LG FO SR**

LINING : Isothermal

CODE : 00J0652

SIZE : 35 - 48



0%  
METAL

**JALOSBERN S3S SC LG FO SR**

CODE : 00J0662

SIZE : 35 - 48



Upper Natural full grain leather AP23™,  
Water and oil repellent

Toe cap Springtane B

Insole Soft

Anti-puncture insert Flextane

Sole Softane Bi-density from BASF®







## JALOSBERN STEEL

S3 SC LG FO SR

INSOLE : Soft

CODE : 00JJB21

SIZE : 35 - 48



## JALOSBERN WINTER STEEL

S3 SC CI LG FO SR

LINING : Isotermal

INSOLE : Soft

CODE : 00JJB22

SIZE : 35 - 48



## JALBORG STEEL

S3 SC CI HI LG FO SR

LINING : 3D Surf mesh

INSOLE : Soft + Gel

CODE : 00J0701

SIZE : 35 - 48

MAXIMUM SAFETY  
FOR ALL 3 MODELS :

**"Flexthane S"**  
**Inox Steel X2**

Double anti-puncture :  
Flexthane + Stainless steel

Upper Natural full grain leather AP23™,  
Water and oil repellent

Toe cap Springtane B

Anti-puncture insert Flexthane and Stainless steel

Sole Softane Bi-density from BASF®



PLEINE FLEUR

Springtane B

**BASF**  
We create chemistry







Full-grain leather AP23™, exclusive to Jallatte, **100% natural**, it is **water** and **oil repellent**.

Compared to the majority of leathers used in safety footwear, it has an increased thickness of between 10% and 15% (2.4 mm), which ensures excellent durability.

In addition, its **water-repellent potential** far exceeds the one required by European standards (12 hours of water repellency).





## JALASKA S3 FO SR

UPPER : Natural full grain leather AP23™,

Water and oil repellent

LINING : Nonwoven fabric

CODE : 00J0266

SIZE : 36 - 48



## JALARTIC S3 CI FO SR

UPPER : Natural full grain leather AP23™,

Water and oil repellent

LINING : Isotermal

CODE : 00J0257

SIZE : 36 - 48



## JALMONT EVOL SAS S3 FO SR

UPPER : Water-repellent full-grain leather with grained finish

LINING : Synthetic

CODE : 00J0255

SIZE : 36 - 48



**Cement specific**

## JALMONT BETON EVOL SAS S3 FO SR

UPPER : Full-grain leather, resistant to active cement agents

LINING : 3D Surf mesh

CODE : 00J0254

SIZE : 36 - 48



## JALMATCH S1P FO SR

UPPER : Smooth perforated suede leather

LINING : 3D Imola mesh

CODE : 00J0351

SIZE : 36 - 47



Toe cap Steel Aérfort 200J

Insole Confort Tech

Anti-puncture insert Stainless steel

Sole Softane Bi-density from BASF®





## JALEREC S3S FO SR

UPPER : Full-grain leather with Pull-up finish  
CODE : 00JMJ07      SIZE : 35 - 47



## JALGERAINT S3S FO SR

UPPER : Full grain water resistant leather  
CODE : 00JMJ06      SIZE : 35 - 47



## JALGAHERIS S3S FO SR

UPPER : Full grain water resistant leather  
CODE : 00JMJ04      SIZE : 38 - 47



These models are DGUV 112-191 certified, which means they can be substituted with a SECOSOL® orthopaedic liner.

Lining	3D Imola mesh
Toe cap	Springtane 200J
Insole	Soft
Anti-puncture insert	Flexthane
Sole	Softane Bi-density from BASF®









# SPECIALS

The safety footwear in the **SPECIALS** collection uses technologies that **ensure optimum protection** for users, **extend product life** and **improve comfort** while preserving foot health.

These **3 new models** have been specifically **developed for high-risk jobs in heavy industry**, steelmaking and industrial maintenance, as well as for metalworkers, boilermakers and locksmiths.



The **Vibram® sole** offers a high level of grip and durability as well as excellent resistance to heat and tears.

The **WG\* Standard** guarantees that the upper can withstand small molten metal splashes.

*\*Test conducted according to the requirements of standard EN ISO 20349-2:2017 + A1:2020*





**JALDRAGSTER** S3S CI HI HRO FO SR

UPPER : Water-repellent pull-up leather

INSOLE : Soft+Gel

LINING : Roma mesh

CODE : JYJY193

SIZE : 35 - 48

**JALNITRO** S3S CI HI HRO FO SR

UPPER : Water-repellent pull-up leather

INSOLE : Soft+Gel

LINING : Roma mesh

CODE : JYJY293

SIZE : 35 - 48

**JALMAGMA**

S3S SC CI HI HRO LG WG FO SR

LINING : 3D Surf mesh

CODE : JYJY506

SIZE : 38 - 48

**JALPLASMA**

S3S SC CI HI HRO LG WG FO SR

LINING : 3D Surf mesh

CODE : JYJY505

SIZE : 35 - 48

**JALTIG** S3S CI HI HRO WG FO SR

SOLE : Triftane X Vibram®

INSOLE : Soft+Gel

LINING : 3D Surf mesh

CODE : JXJX912

SIZE : 35 - 48

**JALELITE** S3S SC CI HI HRO LG FO SR

LINING : 3D Surf mesh

CODE : JYJY507

SIZE : 35 - 48

Upper Full-grain leather with Pull-up finish

Toe cap PremAlu B

Insole Soft

Anti-puncture insert Flexthane

Sole Triple density PU / BASF® Infinergy®  
E-TPU with high energy return /  
Vibram®

## JALELITE

S3S SC CI HI HRO LG FO SR

Code : JYJY507

Size : 35-48



## NO-LACE FASTENING

For optimum support and stability

## FITTING AID



## LEATHER BELLOWS

Prevents particle intrusion

## REFLECTIVE SIDE INSERT

For good visibility at night

## PU RUN-UP FRONT

For greater durability of the product



**INFINERGY® INSERT**  
 >55% energy restitution\*



## UPPER

Water-repellent  
 full-grain leather  
 Pull-Up finish



## INSOLE

Improves weight distribution



## VIBRAM® SOLE

Contact heat resistance (300°)  
 and abrasion resistance

\*Bounce rate in accordance with DIN 53 512





# THE



- + Ideal for security, rescue and surveillance units
- + Excellent grip and durability thanks to Vibram® sole
- + Prevents the risk of falls and eliminates compression points thanks to the BOA® Fit System closure system
- + Saves 1 hour of energy per day to stay toned
- + Ideal for reducing fatigue in heavy walkers
- + Reduces the risk of lower-limb RSI



**JALMARS S3 HRO FO SR**

UPPER : Pure full-grain leather

LINING : 3D Imola mesh

ANTI-PUNCTURE INSERT : Stainless steel

CODE : 00J0246

SIZE : 36 - 47

**JALSCAND S3 HRO FO SR**

UPPER : Pure full-grain leather

LINING : 3D Imola mesh

ANTI-PUNCTURE INSERT : Stainless steel

CODE : 00J0248

SIZE : 36 - 47

Asphalt  
Specific**JALTARMAC EVOL S3 HI HRO FO SR**

UPPER : Full grain water resistant leather

LINING : Leather

ANTI-PUNCTURE INSERT : Stainless steel and  
Isoltane

CODE : 00J0250

SIZE : 38 - 47

**ASEPTANE****JALBIO S2 HRO FO SR**

UPPER : Aseptane, waterproof and breathable

LINING : Fabric

CODE : 00J0271

SIZE : 35 - 47

Toe cap Steel Aérfort 200J  
Insole Confort Tech  
Sole Triftane™ Vibram®









## THE FIRST COLLECTION OF ENERGY-SAVING SAFETY FOOTWEAR

J-PRO is 20347 compliant (without safety toecap) but goes far beyond the standard requirements set out by the standard, as all styles in the collection incorporate additional **A**, **E**, **WRU**, **FO**, **SRC** and **ESD** requirements.



Antistatic  
electrical  
resistance



Energy  
absorption  
at heel



Water repellent  
upper



Resistance  
of sole to  
hydrocarbons



SRC  
Slip resistance



More than 55% in terms of energy stored during walking **exceptional cushioning** and a guaranteed **anti-fatigue effect**.



Xtensible™ non-tied elastic laces with adjustable Stop-Lace lock :

- \* Eliminates the feeling of having swollen feet
- \* Allows them to be put on and taken off rapidly
- \* Reduces the risk of falling



**Speed, safety, comfort** and **hygiene** at the service of the workers.





LIGHT



FLEXIBLE



ANTIFATIGUE



ANTI-SLIP





**JALSALT** ESD O2 FO SRC

LINING : 3D Roma mesh

CODE : JOJO205      SIZE : 35 - 48



ASEPTANE

**JALLABO** ESD O2 FO SRCUPPER : Breathable and waterproof  
microfiber

LINING : 3D Roma mesh

CODE : JOJO213      SIZE : 35 - 48

**JALNIGEL** ESD O2 FO SRC

LINING : 3D Surf mesh

CODE : JOJO212      SIZE : 35 - 48

**JALPEPPER** ESD O2 FO SRC

LINING : 3D Surf mesh

CODE : JOJO204      SIZE : 35 - 48

**SAKINA** ESD O2 FO SRC

LINING : 3D Surf mesh

CODE : JOJO201      Size : 35 - 42

- Upper** PUTEK® PLUS highly resistant to abrasion, water resistant and breathable
- Insole** Soft + Gel
- Sole** Triple density with high energy return PU2D/E-TPU Infinergy® from BASF®







### JALBOSS ESD O2 FO SRC

UPPER : PUTEK® PLUS highly resistant to abrasion,  
water resistant and breathable

LINING : 3D Surf mesh

CODE : JOJO210 SIZE : 38 - 48



### JALDEREK ESD OB A E WRU FO SRC

LINING : 3D Surf mesh

CODE : JOJO208 SIZE : 35 - 48



### MEREDITH ESD OB A E WRU FO SRC

LINING : 3D Surf mesh

CODE : JOJO206 SIZE : 35 - 42



### MIRANDA ESD OB A E WRU FO SRC

LINING : 3D Imola mesh

CODE : JOJO207 SIZE : 35 - 42



Upper Microfiber Aseptane  
Insole Soft + Gel  
Sole Triple density with high energy  
return PU2D/E-TPU Infinergy®  
from BASF®



Products certified according to standard EN ISO 20347

INSOLE

**SOFT**



**SOFT**

SIZE : 35 - 48

CODE : JS 00002

**SOFT+GEL**



**SOFT + GEL**

SIZE : 35 - 48

CODE : JS 00003

**Maxi SOFT Duo**



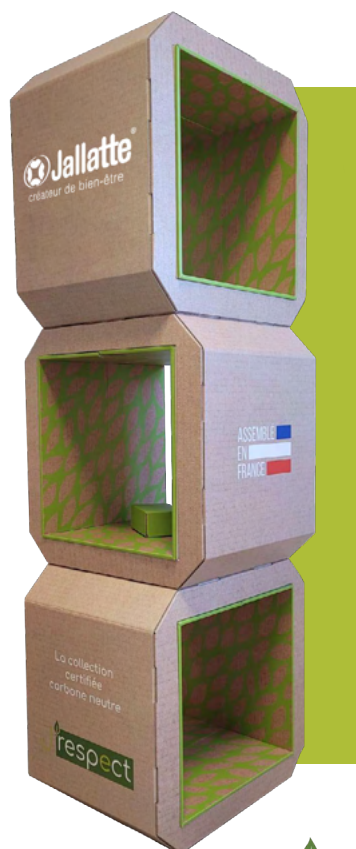
**MAXI SOFT DUO\***

SIZE : 35 - 48

CODE : JS 00004

*\*Only for the models J-INDUSTRY and J-INDUSTRY labelled RESPECT*

J'RESPECT FURNITURE



**J'respect**

**3 MODULE CARDBOARD PODIUM**

MEASUREMENTS : L46 x H138 cm

CODE : ES00141



## J-EXPO FURNITURE



New Jallatte® **ecological** & **sustainable** furniture



Assembly  
**quick & easy**

### PODIUM DUO MOBILE

#### HIGH MOBILE

MEASUREMENTS : L58,2 x H105,7 x B40 cm

CODE : ES00118

#### LOW MOBILE

MEASUREMENTS : L58,2 x H65,2 x B40 cm

CODE : ES00117

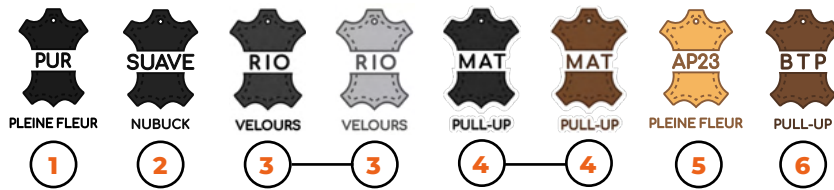


### 4 FOOT DISPLAY STAND

MEASUREMENTS : L40 x H178,1 x B37,5 cm

CODE : ES00115

## UPPER



1. **Water-repellent** full-grain PUR leather.
2. SUAVE full-grain nubuck leather, velvety, **supple** and **breathable**.
3. RIO suede leather, **supple** and **highly breathable**.
4. **Water-repellent** full-grain matte leather with pull-up finish. **Very good waterproofing**.
5. AP23™ full grain leather, a Jallatte exclusive, **100% natural**, is **water and oil repellent**. It is 10% to 15% thicker than most other leathers used in safety footwear (2.4mm), guaranteeing excellent durability over time. What's more, its **resistance to water penetration** far exceeds that required by the European standard.
6. **Water-repellent** full-grain BTP leather with pull-up finish. **Excellent waterproofing**, no water penetration after 7 hours of testing.



PUTEK® technology uses new yarns that are highly **resistant to abrasion**, for greater tenacity and enhanced performance. These highly resistant, water-repellent fabrics make it possible to produce **ultra-light**, **ultra-breathable** products. **PUTEK® SPIDER** is made from **68% recycled polyester**.

## ASEPTANE ASEPTANE-R

Aseptane microfibre is impregnated with resins, making it exceptionally waterproof and breathable, and **easy to clean and maintain**. This microfibre is **ideal for use in damp environments and to protect against fluid splashes**. **RECYCLED ASEPTANE** is made from **40% recycled polyamide**.



1. Microfibre is a material aesthetically similar to leather, made from extremely fine filaments of polyester, polyamide (nylon) or a mixture of the two. Lightweight, robust and durable, it offers excellent breathability, water resistance and abrasion resistance. And it's easy to care for.
2. Recycled leather and nubuck microfibres are made from **40% recycled materials**. The velvet-look microfibre is made from **50% recycled materials**.
3. Light microfibre is as waterproof and breathable as standard leather.



Highly **abrasion-resistant**, **ultra-breathable** 100% polyester technical fabric for extended wear and **optimum foot comfort**.



A technology consisting of a superstructure with a TPU grid designed to give **better support to the upper** made from **lightweight**, **breathable** materials. It also uses the '**seamless**' concept, which reduces the number of seams on the upper, helping to extend the product's lifespan.



## LINING



The GORE-TEX® membrane is an **extremely thin** layer of expanded polytetrafluoroethylene (ePTFE). It contains more than 1.4 billion pores per cm². It is all these pores that ensure the properties of GORE-TEX® fabrics. It is only 0.01mm thick. So it's attached to a **high-performance lining or outer fabric**, creating a GORE-TEX® laminate.



Thermally insulating and breathable fibre designed to ensure the perfect thermal balance inside the boot in every situation. Breathable in summer and warm in winter.



Innovative, **antibacterial**, technical 3D mesh lining that combines high performance **breathability** and **abrasion resistance** with a **soft, comfortable** feel. Its unique 3-layer structure promotes thermoregulation to keep feet dry and comfortable. The Surf-R lining is made from **66% recycled material**.



3D mesh lining, a three-dimensional fabric combining foam for **protection** and **comfort** and an open structure (grid) for peripheral foot ventilation. The lining has a special honeycomb structure, using micro ventilation channels to ensure a high level of breathability. It is abrasion, tear and cut resistant.



3D mesh lining, micro-ventilated technique, smooth appearance, 3-layer structure combining textile mesh, foam and reinforcement grid. **High mechanical resistance** (abrasion and tearing) and **quick drying**.



Extremely supple PREM **calf** leather in white, with a smooth grain finish and **premium quality** for absolute comfort and well-being.

## TOE CAP



Steel toe cap resistant to 200 J. Perforated for **better foot ventilation**.



**Lightweight, non-magnetic** 200J aluminium mouthpiece. While offering the same strength, it is **51% lighter than a steel tip**. **More resistant to impact and compression**, the B toe cap meets the most stringent requirements of the new EN ISO 22568-1:2019 standard (new requirements and test methods for footwear components).



Synthetic polymer toe cap, resistant to 200 J, **non-magnetic** and **athermic**. **Shape memory** toe cap, returns to its initial shape when crushed, making it easier to remove the foot. More **resistant to impact and compression**, the B toe cap meets the most stringent requirements of the new EN ISO 22568-2:2019 standard (new requirements and test methods for footwear components).

## INSOLE



SOFT insole made using BASF® dynamic polyurethane with **memory foam**, that is **heat-sensitive** and active over the entire surface of the foot.

It is right beneath the soles of the feet that SOFT **improves weight distribution** by cushioning pressure points and allowing **positive energy to be returned**.



Bi-material comfort insole : SOFT+GEL consisting of :

1. a SOFT insert made using BASF® Dynamic polyurethane with memory foam, which is **heat-sensitive** and active over the entire surface of the foot.

*It is right beneath the soles of the feet that SOFT **improves weight distribution** by cushioning pressure points and allowing **positive energy to be returned**.*

2. a two-zone GEL insert with **high cushioning capability** at the heel and anatomical extension beneath the midfoot.

*Its design allows for **improved heel shock cushioning** while still providing **excellent sole support**.*



This **removable** insole is made of 2 materials :

1. A 'SOFT' BASF® dynamic polyurethane layer including memory foam, which is heat-sensitive and active over the entire surface of the foot.

*Under the soles of the feet, SOFT **improves weight distribution** by reducing pressure points and the feeling of discomfort.*

2. An integrated 'MAXI'-size anti-fatigue insert made of BASF® Elastopan, an elastomer that is used in anti-fatigue mats.

*Positioned beneath the base layer, this MAXI insert **cushions and alleviates stress on the body**, which is forced to stand upright for many hours a day, both while in motion and while walking, thus **reducing the risk of MSDs** (musculoskeletal disorders) in the lower limbs.*

The Maxi-Soft Duo recycled insole is made from Elastopan and Polyurethane Dynamic **Biomass Balance** from BASF®.



SELECT' insole in extremely supple **calf leather** and Dynamic polyurethane from BASF® with **shape memory**, cushions pressure points, improves weight distribution and absorbs heel shock. **Anatomically shaped** and perforated, SELECT' ensures absolute comfort and well-being.



Coated with an **anti-bacterial** and **breathable** fabric, reinforced in the heel area for **better shock absorption**. The insole is anatomically designed, antistatic, removable and covers 100% of the foot's surface.



## ANTI-PUNCTURE INSERT



**Extra-flexible**, high-tenacity textile mounting pad: non-magnetic, athermic, covers 100% of the pad surface, complies with standard EN ISO 22568-4:2020 and has a resistance of 1,100N. Flexthane R is made from **50% recycled polyester**.



Extra-flexible insole made from **high tenacity** textile with a resistance of 1,100N, **non-magnetic** and **athermic**, which covers 100% of the surface of the foot and complies with standard EN ISO 22568-4:2021.



Stainless steel anti-perforation midsole for maximum protection and resistance to 1,100N.



Composite anti-puncture insert made from non-woven fabric, 54% lighter than a standard anti-puncture insert, complies with standard EN ISO 22568-4:2021, is antistatic, sewn directly onto the upper and covers 100% of the foot for all-round protection. This insert is made from **77% recycled polyester**.

## SOLE



**J-nude 2 J-INDUSTRY**

BASF® PU/PU

BASF® PU/PU sole with a **sporty, urban sport** featuring a linear profile and **excellent slip-resistance**.



**J-ROYAL**

PU2D/E-TPU Infinergy by BASF® size XL with a low density of 0.19

Designed with an **innovative material from the world of running**, this triple density insole offers dynamic performance in 3 phases: **shock absorption**, **energy accumulation** and **dynamic restitution**. It's ideal for anyone who has to travel frequently or over long distances every day.



**J-ENERGY**

PU2D/E-TPU Infinergy of BASF®

Designed with an innovative material used in the **world of running**, this **triple density sole** ensures dynamic performance in 3 phases : **shock absorption**, **energy storage** and **dynamic return**. They are ideal for all those who are subject to frequent movements and who travel long distances daily.



## J-HOP!

PU/PU Extra-Rebound 41,5% by BASF®

With over **40% energy resistance** over the entire surface, both in the support phase and in the thrust phase, this PU/PU Extra-Rebound 41,5% by BASF® sole brings **lightness, wellness and comfort, reducing the feeling of tiredness** both in an upright position and in prolonged activity situations.



## TAPIS ROUGE

PU2D/Elastopan by BASF®

This triple density sole made with a revolutionary elastomer used for the production of **antifatigue** mats distributes the plantar pressures; it is able to **absorb and relieve body stress by reducing the traumas** associated with a prolonged static working position. Ensures high performance in terms of comfort, balance and shock distribution.



## TRIFTANEX

TRIFTANE X is equipped with a **new Vibram® sole**, which guarantees more **durability** and **better resistance to slipping** and on **hot surfaces**.



## J-ESCAPE SPECIALS

Decades of **experience** and **excellence** in sport and mountaineering at the service of the working world today. The Vibram® rubber sole is suitable for every situation, light but **extremely resistant** and performing even in **extreme conditions**.



## Softane Softane Softane Softane

Tradition

Avant-Garde

Prestige

Adventure

The special **bi-density polyurethane** SOFTANE is designed to achieve the perfect balance between **comfort, lightness and durability**. The midsole is developed with a density such as to ensure flexibility and absorption of vibrations and impacts with the ground, while the outsole is designed to **resist to abrasion, hydrocarbons, oils and grease**.



## TRIFTANE

Excellence



The Vibram® Triftane sole made from high-performance rubber guarantees better mechanical resistance to abrasion, detachment and tears. It brings a higher level of grip to reduce the risk of slipping, but also better protection against hot floors (HRO certification/resistance to hot contact up to 300°C).



## VARIOUS



BOA® Fit System is a rapid, easy and accurate lacing system with no need for laces. **Eliminates the risk of falls** and untying laces.



Xtensible™ non-tied elastic laces with adjustable Stop-Lace lock :

- \* Eliminates the feeling of having swollen feet
- \* Allows them to be put on and taken off rapidly
- \* **Reducing risk of fall**

**Speed, safety, comfort and hygiene** at the service of the workers



QuickLio™ Technical "2 in 1" lace loop: holds laces in place for **quick lacing** and **untie**.



TPU cushioned insert positioned on the ankle area enabling the **full protection of the ankle bones** against possible side impacts. Conforms to the additional standards (AN) of EN ISO 20345:2011.



Innovative "multi-contact" system on the insole for **dissipating electrostatic charge**.

Thanks to LINK-ESD™, you will feel, step by step, as if you were connected to the ground thanks to a device certified according to the EN 61340-4-3 and EN 61340-5-1 standards, which ensures the **total absence of risks associated with possible electrical discharges harmful** to electronic and computer equipment.



**Internal orthopaedic insole** approved for safety footwear in accordance with DGUV 112-191 on the use of foot and knee protection.

DGUV 112-191 certification allows the replacement of the insole supplied by Jallatte with a SECOSOL® orthopaedic insole manufactured by Hartmann Matthias Orthopädie und Sport GmbH laboratories in Dillenburg, Germany.



Patented technology



Patent application filed

MODEL	STANDARD REQUIREMENTS	CODE	PAGE
INES ESD	S1PS CI FO SR	JYJY211	28
JALACER	S7S CI HI HRO LG FO SR	00JJE23	58
JALACTIVE ESD	S1PS CI FO SR	JYJY102	26
JALAERO ESD	S3S CI FO SR	JVJV201	44
JALALTA ESD	S3S SC CI LG FO SR	JYJY495	54
JALAMBER ESD	S3S CI LG FO SR	JQJQ201	48
JALANGO ESD	S3S SC CI LG FO SR	JYJY497	54
JALARCHER	S3S CI HI HRO LG FO SR	00JJV28	60
JALARTIC	S3 CI FO SR	00J0257	67
JALASKA	S3 FO SR	00J0266	67
JALATHLON ESD	S3 SRC	00JN107	41
JALaubIER ESD	S3S CI FO SR	JYJY464	14
JALBARAD	S3 SC CI HI LG FO SR	JYJY222	55
JALBARON ESD	S3S SC CI FO SR	JRJR101	18
JALBASALT ESD	S3S CI FO SR	JIJ1534	13
JALBEECH	S3 SC CI LG FO SR	00JJE44	63
JALBIO	S2 HRO FO SR	00J0271	74
JALBOMBER ESD	S3S CI FO SR	JYJY498	22
JALBORG STEEL	S3 CI HI FO SR	00J0701	65
JALBOSS ESD	02 FO SRC	JOJ0210	79
JALBOX	S3 SC CI HI HRO LG FO SR	00JJE19	59
JALBUMPER ESD	S3S SC CI LG FO SR	JIJ1174	39
JALCALCIUM ESD	S2 FO SR	JIJ1282	38
JALCARBO ESD	S3S FO SR	JYJY217	27
JALCITRINE ESD	S3S CI LG FO SR	JQJQ103	49
JALCLIMATE	S7S CI FO SR	JYJY137	24
JALCLOUD ESD	S1PS CI FO SR	JIJ1134	36
JALCOPPER ESD	S3S CI LG FO SR	JQJQ101	48
JALCORAIL ESD	S1PS CI LG FO SR	JQJQ205	48
JALCROSS ESD	ESD S3 SRC	00JN120	41
JALCROWN ESD	S1PS SC CI FO SR	JRJR207	19
JALCYBER ESD	S3S CI HI FO SR	JIJ1214	36
JALCYPRESS	S3 SC CI LG FO SR	00JJE45	63
JALDARK	S3S CI HI HRO LG FO SR	00JJE64	60
JALDATA ESD	S1PS CI FO SR	JIJ1234	36
JALDENIRO	S1PS FO SR	JYJY501	23
JALDEREK ESD	OB A E WRU FO SRC	JOJ0208	79
JALDOJO ESD	S3 SRC	00JN101	40
JALDRAGSTER	S3S CI HI HRO FO SR	JYJY193	71
JALDUKE ESD	S3S SC CI FO SR	JRJR201	18
JALDYNAM ESD	S3S CI FO SR	JYJY103	24
JALEBENE	S3S CI LG FO SR	00JJE65	62
JALECO ESD	S3S CI FO SR	JIJ1434	12
JALELEC ESD	S1PS CI HI FO SR	JIJ1156	36
JALELITE	S3S SC CI HI HRO LG FO SR	JYJY507	71
JALEREC	S3S FO SR	00JMJ07	68
JALEVA ESD	S3 CI SRC	JHJH307	32
JALFARO	S3 SC CI LG FO SR	JYJY224	55

MODEL	STANDARD REQUIREMENTS	CODE	PAGE
JALFIR	S3 AN SC CI LG FO SR	00JJE41	63
JALFOREST ESD	S3S CI SC LG FO SR	JYJY454	15
JALFRIGG	S3S CI FO SR	00J0652	64
JALFUTURE ESD	S3S CI FO SR	JIJ1414	12
JALGABBRO ESD	S2 FO SR	JIJ1522	13
JALGAHERIS	S3S FO SR	00JMJ04	68
JALGAND	S7S SC CI LG FO SR	JYJY231	53
JALGEAR ESD	S3S CI FO SR	JYJY232	25
JALGEM ESD	S1PS CI LG FO SR	JQJQ207	49
JALGERAINT	S3S FO SR	00JMJ06	68
JALGRAPHITE ESD	S2 FO SR	JIJ1272	38
JALGROVE ESD	S3S CI SC LG FO SR	JYJY444	15
JALHAKA	S3S FO SR	00J0650	64
JALHICKORY	S3 SC CI HI HRO LG FO SR	00JJE15	59
JALHYBRIS ESD	S3S CI FO SR	JHJH408	31
JALHYDRO ESD	S3S CI FO SR	JYJY484	14
JALHYGIE ESD	S3S FO SR	JYJY216	27
JALINO	S3 CI HRO SRC	JXJX006	33
JALIROK	S3 AN SC CI HI HRO LG FO SR	00JJE17	59
JALJAB ESD	S3 SRC	00JN119	41
JALJUNO ESD	S3 CI SRC	JHJH306	32
JALKANBAN ESD	S1PS CI FO SR	JIJ1166	36
JALKING ESD	S3S SC CI FO SR	JRJR103	19
JALKOHAI ESD	S3 SRC	00JN128	40
JALLABO ESD	02 FO SRC	JOJ0213	78
JALLADY ESD	S3S CI FO SR	JVJV204	45
JALLEAN ESD	S1PS CI FO SR	JIJ1266	36
JALLIBER ESD	S3S CI FO SR	JYJY474	14
JALLINEN ESD	S1PS CI LG FO SR	JQJQ208	48
JALLORD ESD	S3S SC CI FO SR	JRJR202	18
JALLYS ESD	S1PS SC CI FO SR	JRJR206	19
JALMAGMA	S3S SC CI HI HRO LG WG FO SR	JYJY506	71
JALMAJESTY ESD	S3S SC CI FO SR	JRJR102	18
JALMARS	S3 HRO FO SR	00J0246	74
JALMATCH	S1P FO SR	00J0351	67
JALMECA ESD	S1PS CI HI FO SR	JIJ1256	36
JALMETIS ESD	S3S CI FO SR	JHJH308	31
JALMONT EVOL SAS	S3 FO SR	00J0255	67
JALMONT BETON EVOL	S3 FO SR	00J0254	67
JALMUDO	S3 SC CI LG FO SR	JYJY223	55
JALNANO ESD	S3S CI FO SR	JIJ1224	35
JALNATION ESD	S3S CI FO SR	JVJV203	44
JALNATURE ESD	S3S CI FO SR	JIJ1424	12
JALNIGEL ESD	02 FO SRC	JOJ0212	78
JALNITRO	S3S CI HI HRO FO SR	JYJY293	71
JALNORA ESD	S3S CI FO SR	JYJY252	53
JALO2 ESD	S1PS CI FO SR	JIJ1446	12
JALOAK	S3 SC CI LG FO SR	00JJE40	63



MODEL	STANDARD REQUIREMENTS	CODE	PAGE
JALONYX ESD	S3S CI FO SR	JIJ1544	13
JALOPAL ESD	S3S CI LG FO SR	JQJQ104	48
JALORKA	S3 SC AN CI HI HRO LG FO SR	00JJE58	60
JALOSBERN	S3S FO SR	00J0662	64
JALOSBERN STEEL	S3 FO SR	00JJB21	65
JALOSBERN WINTER STEEL	S3 CI FO SR	00JJB22	65
JALOXY ESD	S1PS CI FO SR	JIJ1556	12
JALPACINO	S3S CI FO SR	JYJY500	23
JALPATRIOT ESD	S3S CI FO SR	JVJV103	44
JALPEARL ESD	S3S CI LG FO SR	JQJQ204	48
JALPEPPER ESD	02 FO SRC	JOJO204	78
JALPEPS ESD	S1PS CI FO SR	JYJY201	26
JALPERFECT ESD	S3S CI FO SR	JYJY251	22
JALPLASMA	S3S SC CI HI HRO LG WG FO SR	JYJY505	71
JALPLUME ESD	S1PS CI FO SR	JVJV205	45
JALPOLE	S7 CI FO SR	00JJS11	64
JALPOLYXO	S3 CI HRO SRC	JXJX906	33
JALPRINCE ESD	S3S SC CI FO SR	JRJR203	19
JALPROCESS ESD	S3S CI HI FO SR	JIJ1114	36
JALPULSE ESD	S3S CI FO SR	JYJY104	24
JALPUNCH ESD	S1PS CI FO SR	JYJY101	26
JALPYTHON ESD	S3S CI FO SR	JIJ1244	36
JALQUARTZ ESD	S2 FO SR	JIJ1512	13
JALREI ESD	S3 SRC	00JN129	40
JALRIVER ESD	S3S CI FO SR	JYJY494	14
JALROADSTER	S3S SC CI HI HRO LG FO SR	JIJ1194	39
JALROCHE	S7S CI HI HRO LG FO SR	00JJV01	58
JALRUN ESD	S1PS CI FO SR	JYJY202	26
JALSALIX	S3 SC CI HI HRO LG FO SR	00JJE16	59
JALSALT ESD	02 FO SRC	JO205	78
JALSCAND	S3 HRO FO SR	00J0248	74
JALSEQUOIA	S3 SC CI LG FO SR	00JJE42	62
JALSIBERIEN	S7S CI HI HRO LG FO SR	00JJV33	58
JALSILK ESD	S1PS CI LG FO SR	JQJQ206	49
JALSILVER ESD	S3S CI LG FO SR	JQJQ202	49
JALSKIN ESD	S3S CI FO SR	JYJY234	25
JALSOLID ESD	S3S CI FO SR	JYJY134	25
JALSPACE ESD	S3S CI FO SR	JVJV101	44
JALSPRING ESD	S3S CI FO SR	JYJY203	24
JALSTRATO ESD	S3S CI FO SR	JVJV206	44
JALTAÏ ESD	S3 SRC	00JN103	40
JALTAIL ESD	S3S CI FO SR	JVJV102	45
JALTANO ESD	S3S SC CI LG FO SR	JYJY496	54
JALTARAK	S3 AN SC CI HI LG FO SR	JYJY226	55
JALTARMAC EVOL	S3 HI HRO FO SR	00J0250	74
JALTECHNO ESD	S3S CI FO SR	JIJ1124	36
JALTERRE	S7S CI HI HRO LG FO SR	00JJV31	58
JALTEX	S7S CI LG FO SR	00JJV53	63

MODEL	STANDARD REQUIREMENTS	CODE	PAGE
JALTHIA ESD	S1P SRC	JHJH402	32
JALTIG	S3S CI HI HRO WG FO SR	JXJX912	71
JALTITANIUM ESD	S3S CI LG FO SR	JQJQ102	49
JALTONIC ESD	S3S CI FO SR	JYJY204	24
JALTOPAZ ESD	S3S CI LG FO SR	JQJQ203	49
JALTOUNDRAS ESD	S3S CI FO SR	JVJV207	13
JALTRAILER ESD	S3S SC CI LG FO SR	JIJ1184	39
JALTREE ESD	S3S CI SC LG FO SR	JYJY434	15
JALTRUCK ESD	S3 CI SRC	JIJ1284	39
JALTURBO ESD	S3S CI FO SR	JYJY132	25
JALURANIA ESD	S3 CI SRC	JHJH407	32
JALVIVO ESD	S3S CI FO SR	JIJ1447	12
JALWAVE ESD	S3S CI FO SR	JYJY499	22
JALWENGE	S3S CI LG FO SR	00JJE70	62
JALWING ESD	S3S CI FO SR	JVJV202	45
LAIA ESD	S1PS CI FO SR	JYJY212	28
MEREDITH ESD	OB A E WRU FO SRC	JOJO206	79
MIKY ESD	S3S CI FO SR	JYJY109	28
MIRANDA ESD	OB A E WRU FO SRC	JOJO207	79
NOA ESD	S3S CI FO SR	JYJY209	28
SAKINA ESD	02 FO SRC	JOJO201	78

● DISCONTINUED ITEM







Despite a revision of EN ISO 20345 in 2022, EN ISO 20345:2011 is still valid for new certification until November 11, 2024. Therefore, all certificates issued up to this date will be valid for 5 years, i.e. until November 11, 2029. During this transition period, the two versions of the standards will coexist. In our next 2026 catalog, we'll be unveiling all aspects of these new standards requirements, the new CE markings markings and their impact on the technological and safety choices of our collections.

CATEGORIES		FUNDAMENTAL REQUIREMENTS		ADDITIONAL REQUIREMENTS	SYMBOLS
EN ISO 20345:2011 Toe 200 J/15kN	EN ISO 20347:2012	Class I (shoe)	Class II (boot)		
SB		●	●		
S1		●		Closed heel area Antistatic properties Energy absorption in the heel	A E
	01	●		Resistance of the sole to hydrocarbons	FO
S2	02	●		Same as S1/01 plus: resistance to water penetration	E/FO WRU
S3	03	●		same as S2/02 plus: resistance to perforation. Cleated soles	A/E/WRU/ FO/P

ADDITIONAL SYMBOLS USED		REQUIRED MINIMUM VALUES EN ISO 20345:2011 + EN ISO 20347:2012
Resistance to perforation	P	≥ 1100 Newton
Electric resistance: - Antistatic - Conductive	A C	between $1 \times 10^5 \Omega$ a $1 \times 10^9 \Omega$ < $1 \times 10^9 \Omega$
Resistant to harsh environments : - Cold isolation - Heat isolation	CI HI	by temperature < 10°C by temperature > 22°C
Resistance of the sole against contact heat	HRO	contact at 300°C for 60 secs – no melting
Resistance of the sole Against hydrocarbons	FO	always present by EN ISO 20345:2011 and by EN ISO 20346:2011 but to be specified when required by EN ISO 20347:2012
Energy absorption capacity in the heel area	E	≥ 20 Joule
Resistance of the whole shoe to water penetration	WR	no penetration within first 15 mins. After 100 flex should not penetrate more than 3 square Cm
Resistance of the upper to water penetration	WRU	> 60 mins - Absorbance < 30%
Ankle protection	AN	average value > 20kN
Shoe with metatarsal protection	M	height after shock > 40 mm (tg 42)
Cut resistant upper	CR	I factor > 2,5
Features spiked soles	NO SYMBOL	Stud height ≥ 2,5 cm

### Slip resistance of the sole

Regulation: EN ISO 20345:2011 / 20347:2012

Marking symbol	Required conditions provided by the regulation
<b>SRA</b> Test surface: ceramics Lubricant: water and detergent	≥ 0.32 flat footwear ≥ 0.28 footwear inclined 7° towards the heel
<b>SRB</b> Test surface: stainless steel lubricant: Glycerin	≥ 0.18 flat footwear ≥ 0.13 footwear inclined 7° towards the heel
<b>SRC</b>	Both above described conditions required

Personal Safety Equipments (P.P.E.) are ruled by two European regulations:

- the 89/686 CE which defines the obligations of the producer
- the 89/656 CE relating to the use, which defines the obligations of the companies and the workers.

Safety, protectional and professional footwear are identified as Personal Safety Equipments

### OBLIGATIONS OF THE PRODUCER

By purchasing Jallatte® products you are assured that all footwear have met the certification procedures based on the European regulations, as shown by the CE marking. Each box contains an informative note of use which establishes the risks covered. For every model, Jallatte® issues a declaration of conformity.

### OBLIGATIONS OF THE COMPANIES AND THE WORKERS

besides the priority of collective protection, the directive establishes an obligation of health and safety. The employers must:

- locate the risks which cannot be avoided through collective protection

- select the P.P.E. suitable and appropriate to the risks, in consultation with the R.S.P.P.
- select the P.P.E. compatible with the types of work to be executed and with the principles of ergonomics
- make the P.P.E. available to the workers
- monitor actual usage
- provide the P.P.E. for free and for personal use
- ensure the proper functioning, the hygienic status and maintenance
- proceed or o carry out periodical general checks for some categories of P.P.E.
- ensure information, education, instruction, training of the use of P.P.E. And the risks covered
- prepare a delivery note of the P.P.E. For the worker

And further:

- the P.P.E. are not to be considered prizes in kind
- the responsibility of the worker is only disciplinary (omission to wear the protections) and is subordinated to a criminal matter responsibility of the employer

### THE CERTIFICATION PROCEDURES

All Jallatte® footwear belongs to class II (protection against severe risks). Therefore all footwear is submitted to the specific CE examination at an enabled body at a European level'.

Basing on the analyses and the executed tests for this type in conformity to the regulation EN ISO 20344:2011, on the technical documentation and the informative note of use, a CE attestation is released, valid in whole Europe.

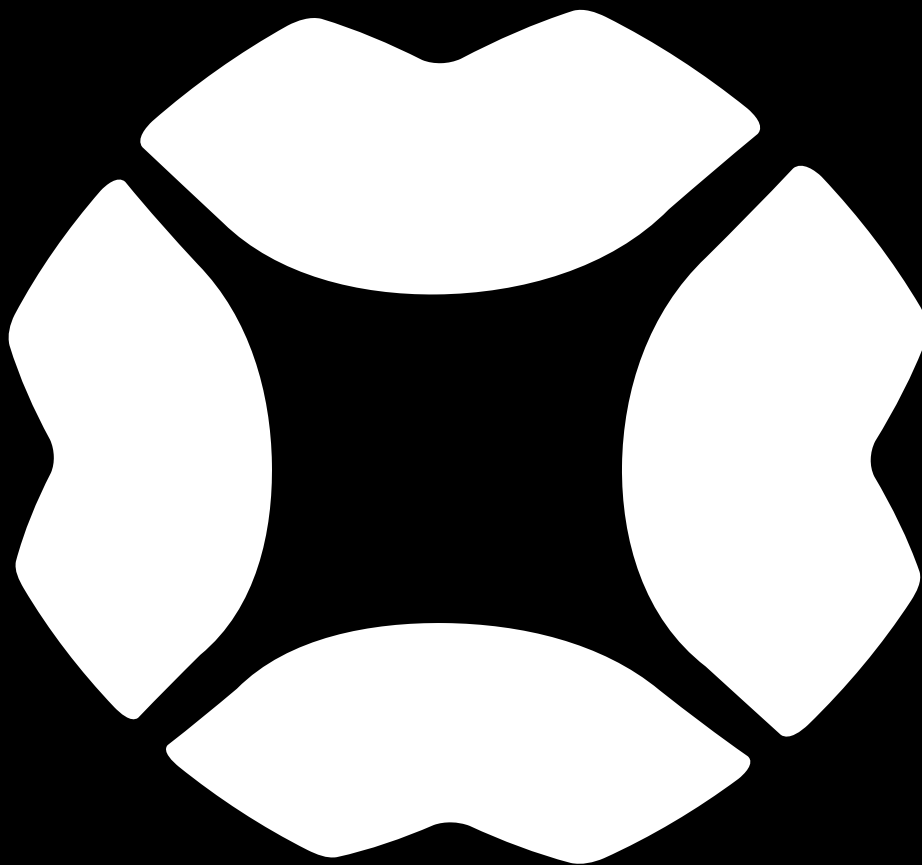
### Notes

It is forbidden to affix on a P.P.E., on it's box and on any other pertinent document any brand or writing susceptible to create confusion with the markings provided within the framework of the certification procedures in conformity with Art. R233.50.1

This catalogue replaces all previous documents.

With the aim to improve our collections, all products included in this catalogue may be replaced and/or modified.

Images are for illustration purposes only and are not legally binding.



Unit 1A, EASTERN PARK | EASTERN AVENUE | LICHFIELD

WS13 7SY | ENGLAND

Tel. +44 (0) 154 3 417 241

[info.uk@jallatte.com](mailto:info.uk@jallatte.com)



[www.jallatte.com](http://www.jallatte.com)

DECEMBER 2025 EDITION



 **Jallatte®**

